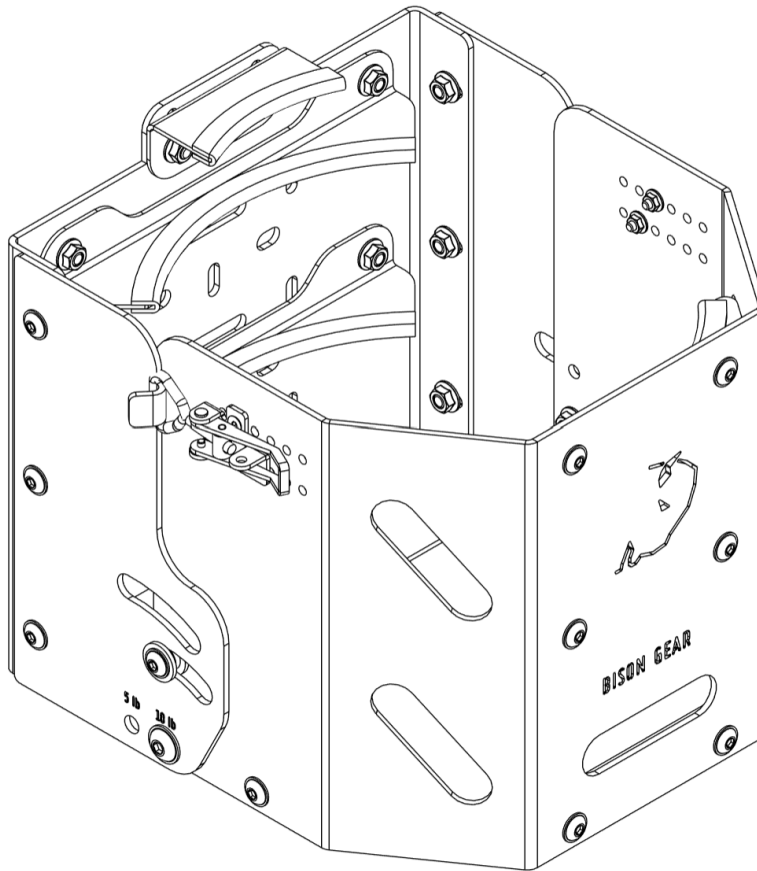




BISON GEAR

Gas Tank Holder – 5lb - 10lb Installation Guide

GAS-CAN-5lb-10lb



Bison Gear is not responsible for the installation done by the customer. If you are not sure of your manual and technical skills, we recommend using qualified workshop.



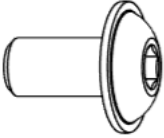

BISON GEAR

Before you start

Familiarize yourself with these instructions. The Gas Tank Holder is shipped in one package. Ensure that all listed parts and hardware are present in package. Gather the required tools. The installation will necessitate one adult.

Part list:

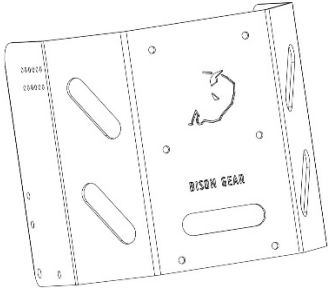
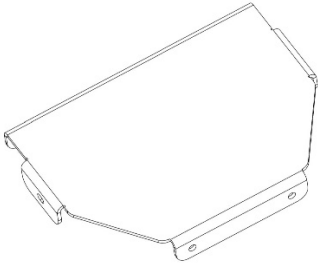
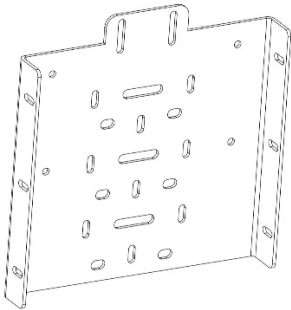
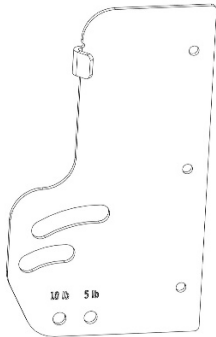
Installation kit

LP	PART	QTY	IMAGE
1	Bolt M6x16 ISO 7380-2	4	
2	Flange nut M6 DIN 6923	4	



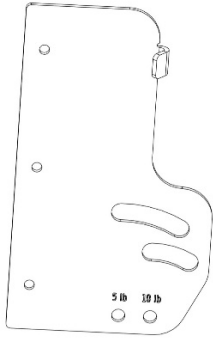
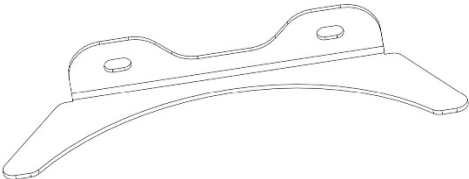
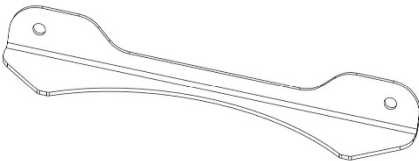
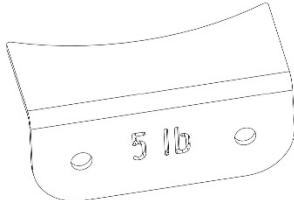
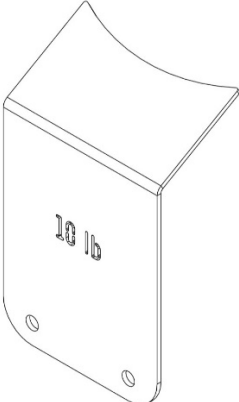
BISON GEAR

Gas tank holder – part list

LP	PART	QTY	IMAGE
1	Tank holder	1	
2	Shelf	1	
3	Base tank holder - back	1	
4	Base tank holder – left side	1	



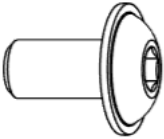
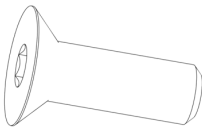



BISON GEAR

5	Base tank holder – right side	1	
6	Front bumper	2	
7	Back bumper	2	
8	5lb upper holder	1	
9	10lb upper holder	1	



10	Toggle latch	2	
11	Sleeve 6/18	4	
12	Rubber edge protection	0.9m	
13	Plastic washer M8	2	
14	Flat washer M8	2	
15	Bolt M6x12 ISO 7380-2	20	
16	Bolt M6x20 ISO 7380-2	2	



17	Bolt M8x25 ISO 7380-2	2	
18	Bolt M4x12 DIN 7991	4	
19	Flange nut M6 DIN 6923	22	
20	Flange nut M4 DIN 6923	4	
21	Nylon nut M8 DIN 985	2	

List of necessary tools¹:

- 2.5 mm Allen Key (Hex)
- 4 mm Allen Key (Hex)
- 5 mm Allen Key (Hex)
- 7 mm wrench
- 10 mm wrench
- 13 mm wrench
- pliers

¹ NOTE: The tools **are not** the part of the set.

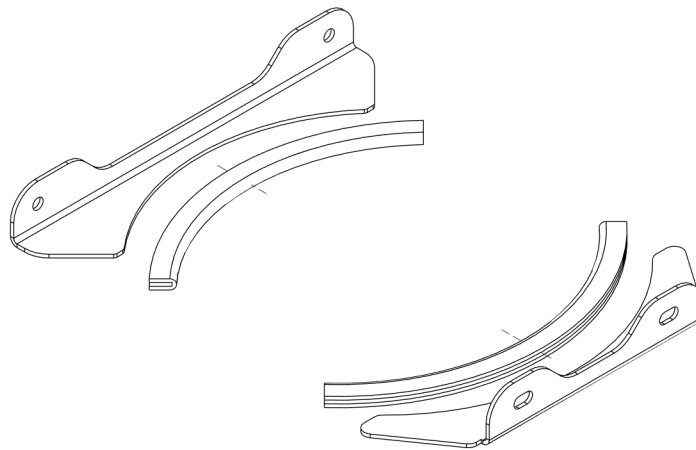


BISON GEAR

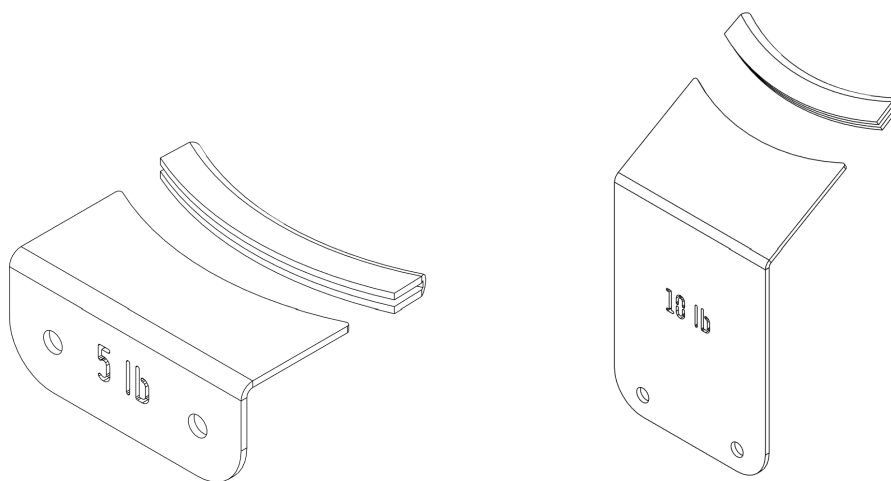
Installation:

Before you start, you need to prepare the components before main installation.

1. Cut the **rubber edge protection** and place it on the edge of the front and rear bumpers, as shown in the image below (edge protection length: back bumper ~ **17 cm**, front bumper ~ **19 cm**).



2. Do the same for the **upper holders** (5lb upper holder, 10lb upper holder) (edge protection length: “5lb”- **8cm**, “10lb”- **8 cm**).





BISON GEAR

After preparation you can start mount your tank holder. Tank holder can be use with 5lb gas tank and 10 lb gas tank.

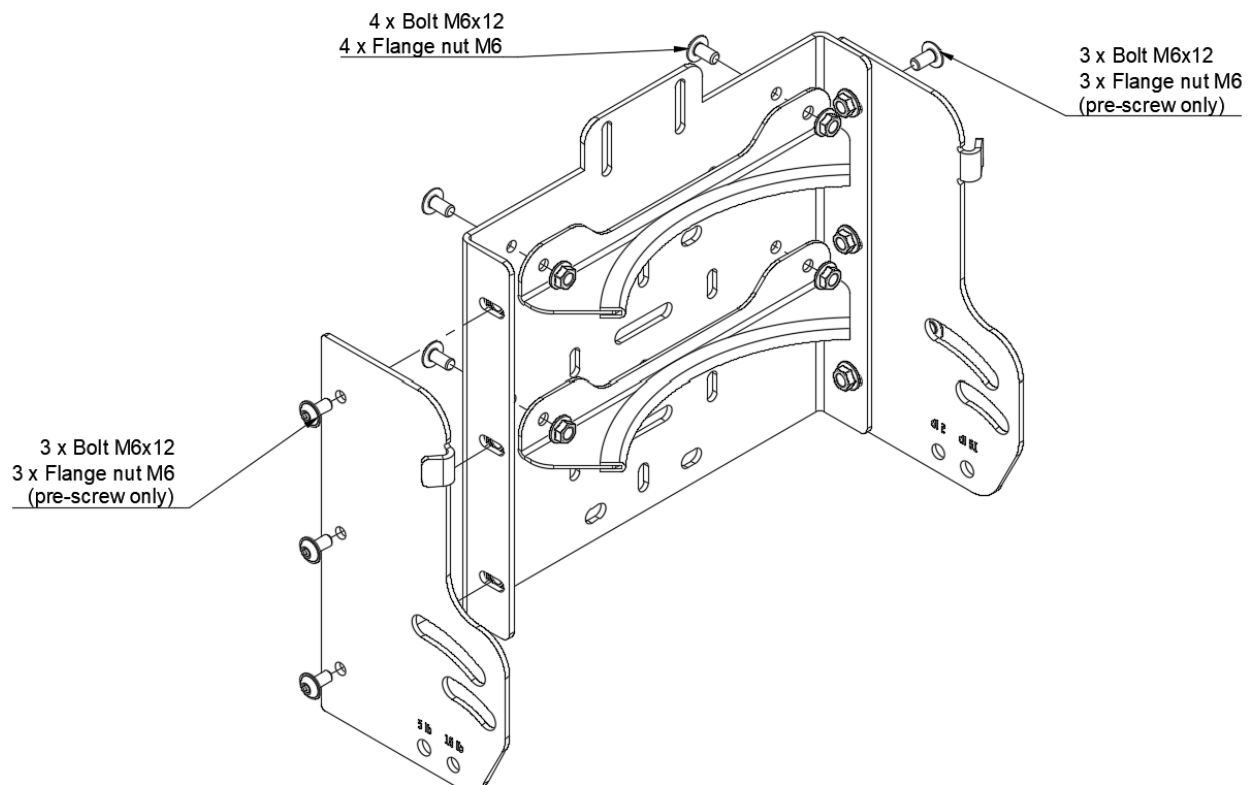
Further instruction will be divided into **two cases** because each product configuration requires separate installation instructions. **First part** of instruction will be for a configuration with a 5-pound tank (**pages 9-16**), and **the second part** for a configuration with a 10-pound tank (**pages 17-23**).



BISON GEAR

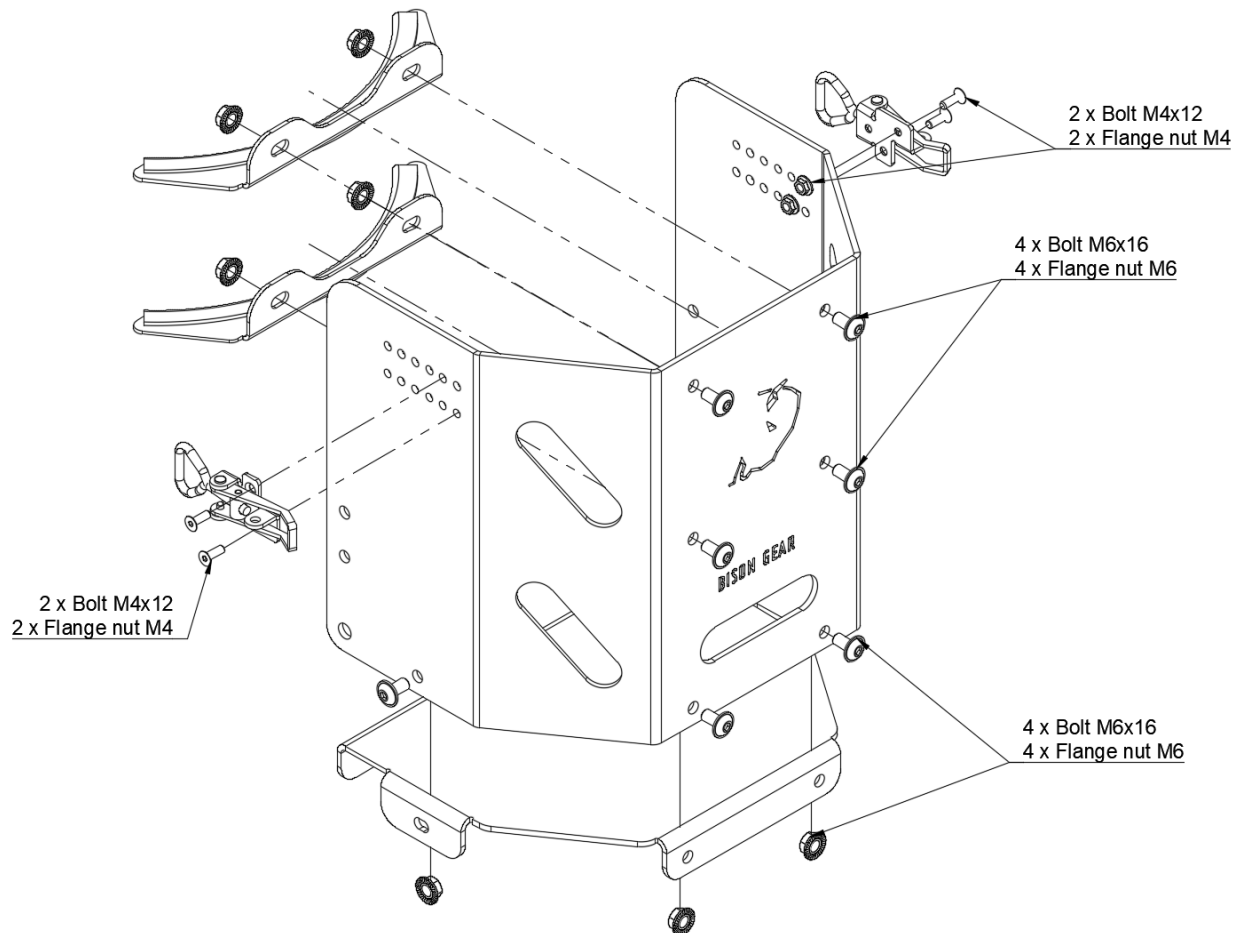
CASE 1 – 5 lb tank holder configuration

Below are diagrams showing how to assemble a 5 lb tank holder. Follow to the instructions and the steps carefully.





BISON GEAR



Now you can assemble these parts **together**. Below is a diagram which shows you how to do it. Before you start, gather all fasteners you will need in next step.

This is the most difficult part of the assembly.

The parts have markers above holes (**5lb** and **10 lb**). In this case choose “**5lb**” holes.

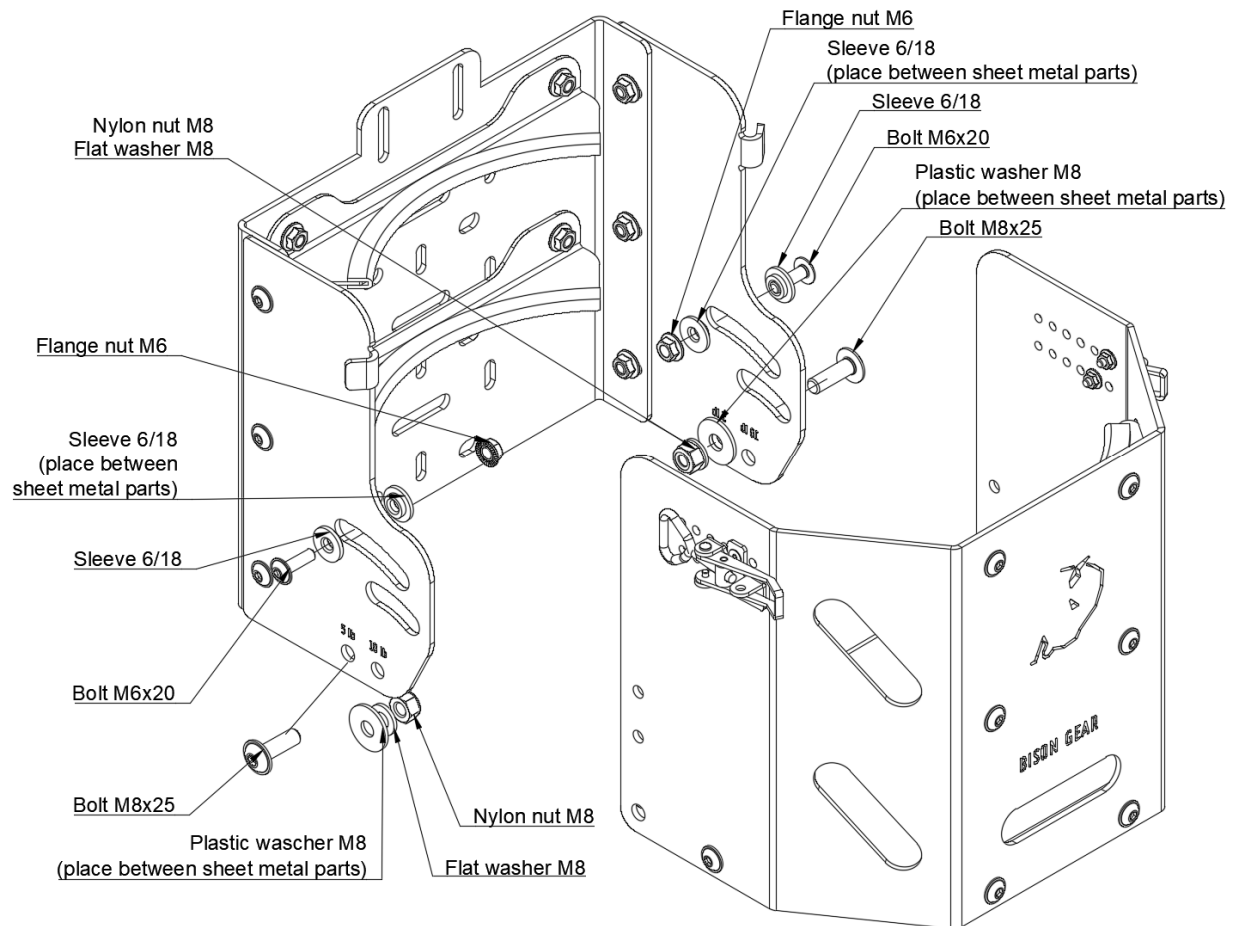
As you can see on the diagram, there are some guidelines.

Remember, place a **plastic flat washers M8** between the sheet metal parts and do the same with the **2 flange sleeves**. Put the **collar of the sleeve** (right and left side) into oblong hole and assemble two parts of the gas tank holder. Screw them together using fasteners shown on the diagram.



BISON GEAR

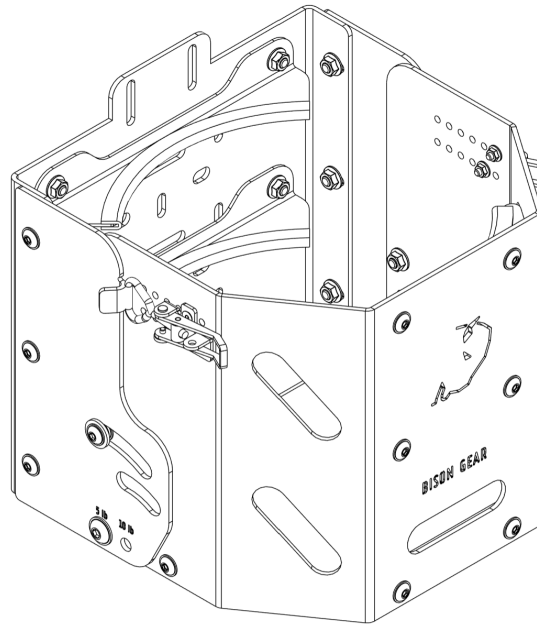
During tightening **M8 bolts** check if the parts can rotate. Tighten the screws in such a way that a **slight resistance** is felt when rotating the part.





BISON GEAR

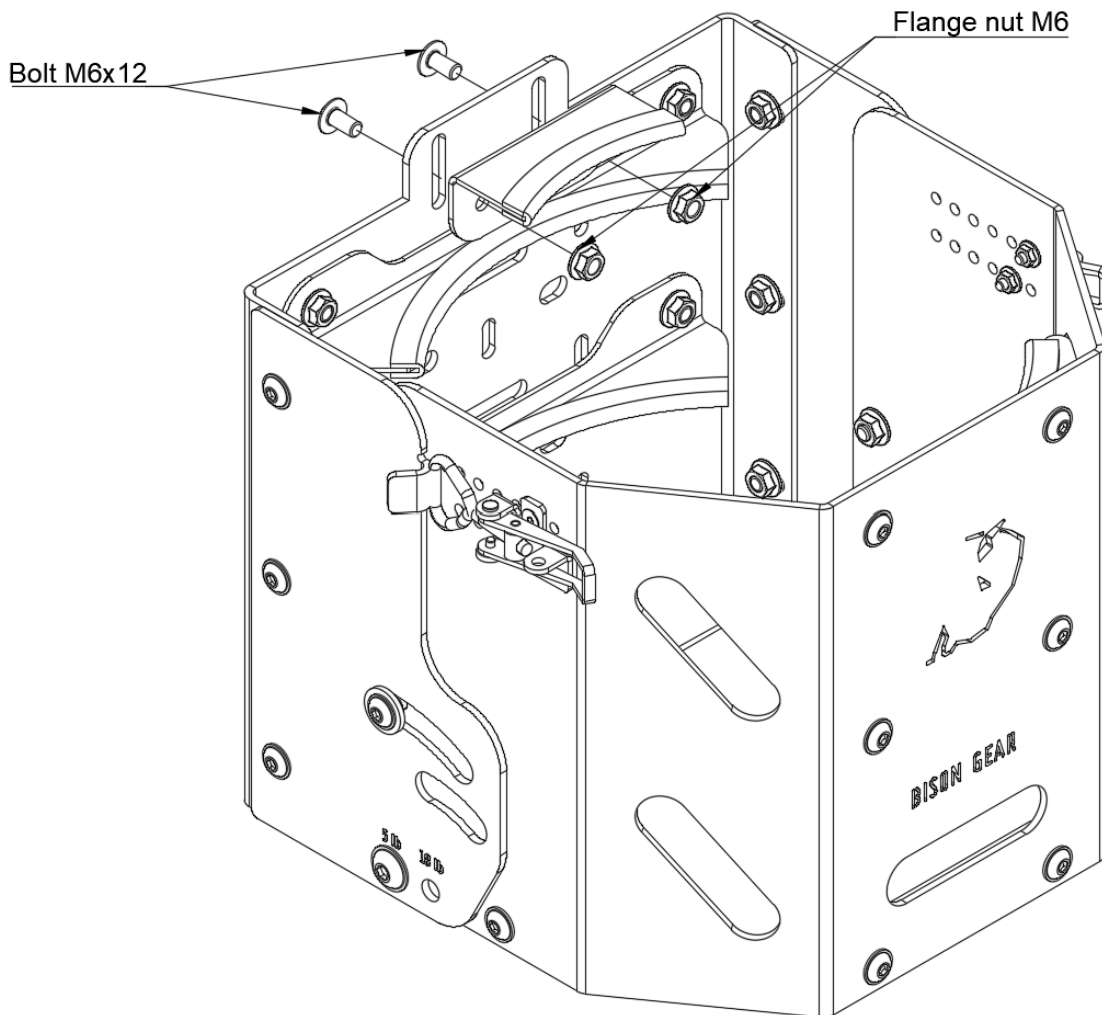
After assembly



Now you need to mount **upper holder**. For this configuration choose 5lb upper holder (**mark – 5lb**). Assemble it according to the **diagram on page 13**.



BISON GEAR





BISON GEAR

The last thing is to adjust the tank holder to the dimensions of the gas tank you have.

The gas tank should hold securely to the tank holder and under no circumstances can it fall out of the holder.

After closing tank holder, the gas tank should be slightly compressed. To adjust holder to your tank diameter, use 6 bolts (three on the left and three on the right side). The bolts should be **only pre-screwed** – according to the instruction.

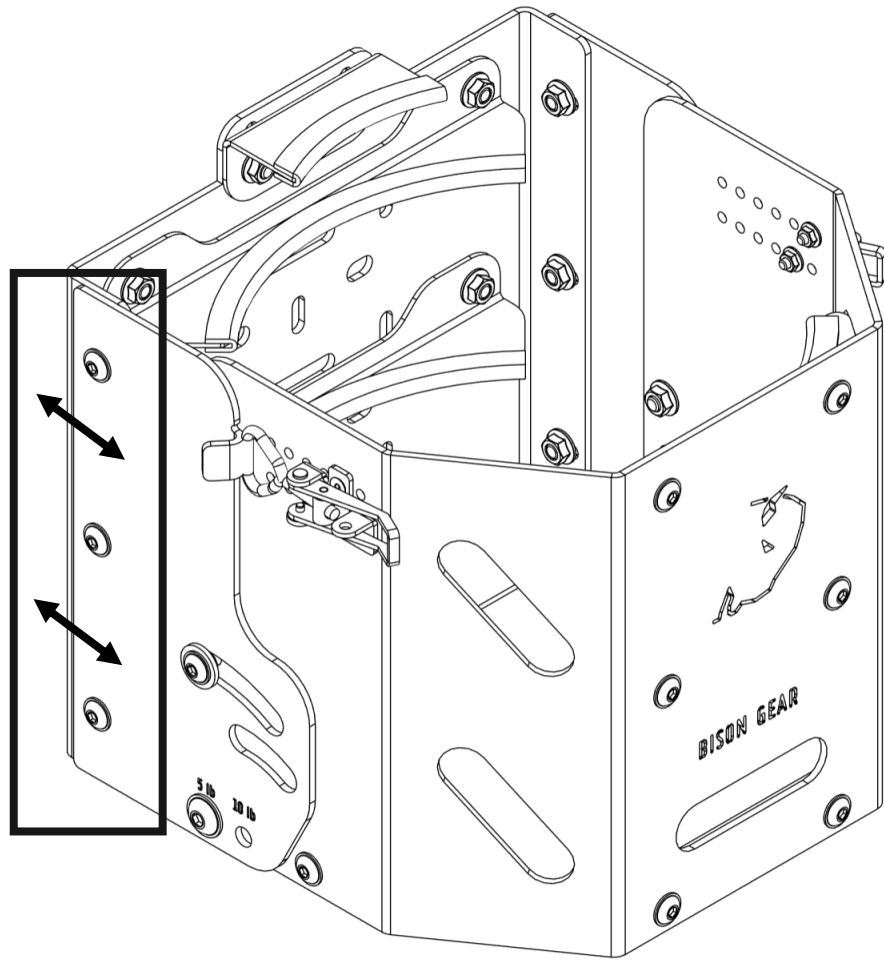
Distance between the bumpers should be less than diameter of the tank.

Move the parts, tighten the bolts and check if the gas tank hold well (gas tank and handle cannot be separated). If it is not appropriate, perform the procedure again until the condition is not met. **Remember, gas tank has to stick to all four bumpers.**

Additionally, you can change position of toggle latches (the position of the upper diagram is recommended) to make some compression of the gas tank. You can choose other holes if needed.



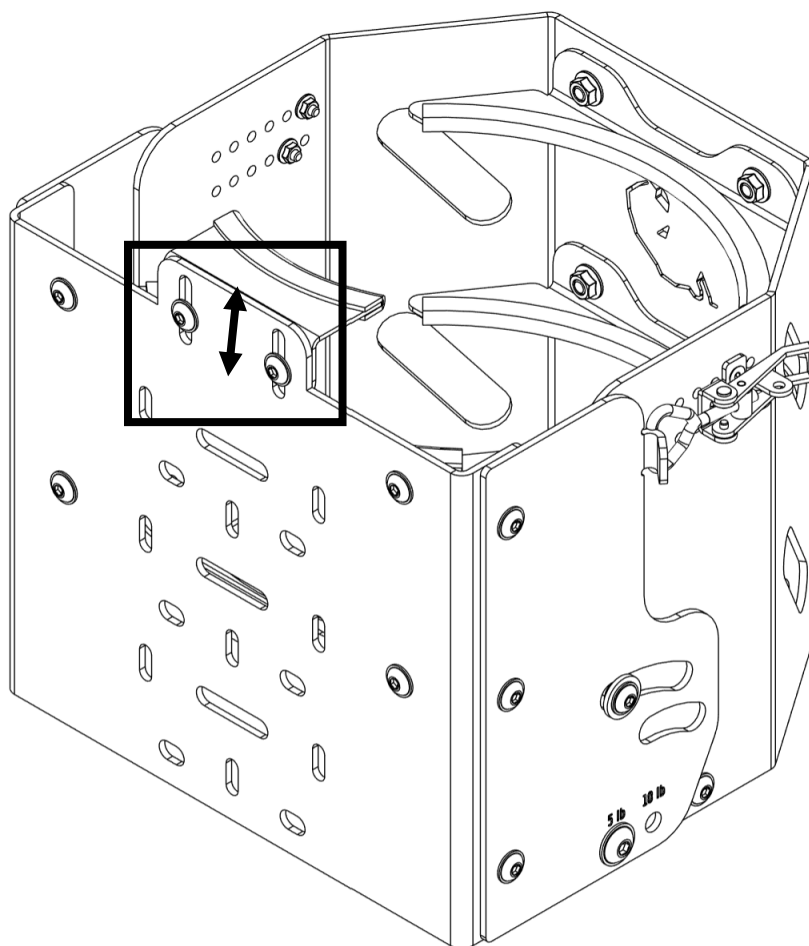
BISON GEAR



Adjust **upper tank holder** to the height of your's gas tank. Put the **gas tank** inside the holder and close toggle latches. Move **upper bracket** and resist it on the **gas tank**. Tighten the bolts. Move upper bracket and resist it on the gas tank. The upper bracket should protect the gas cylinder from falling out.



BISON GEAR



The set includes installation kit. Mount the tank holder (using **4 bolts M6x16 and flange nuts**) to the car.

Make sure that everything is mounted properly, and all the bolts are tightened. If it everything is correct, your work is done.

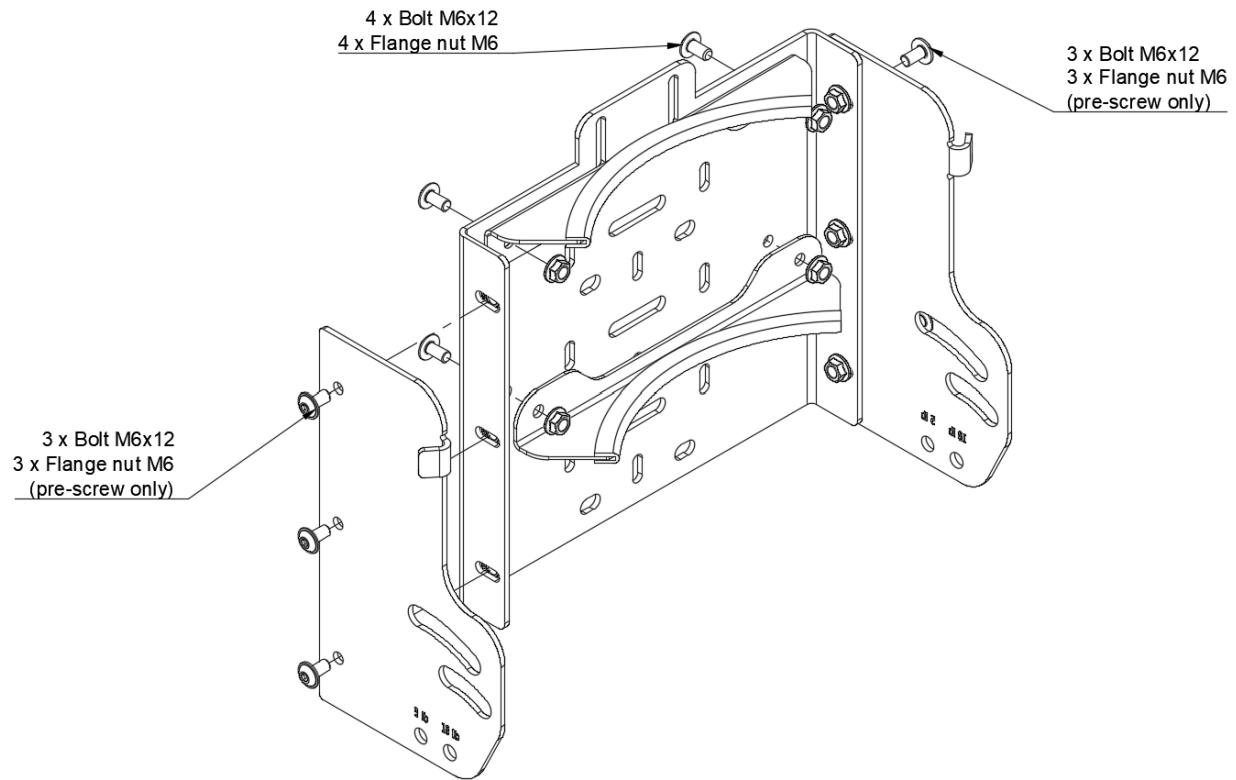
After 50 km check tightening of the screws. Before each trip, check that the gas tank holds properly.



BISON GEAR

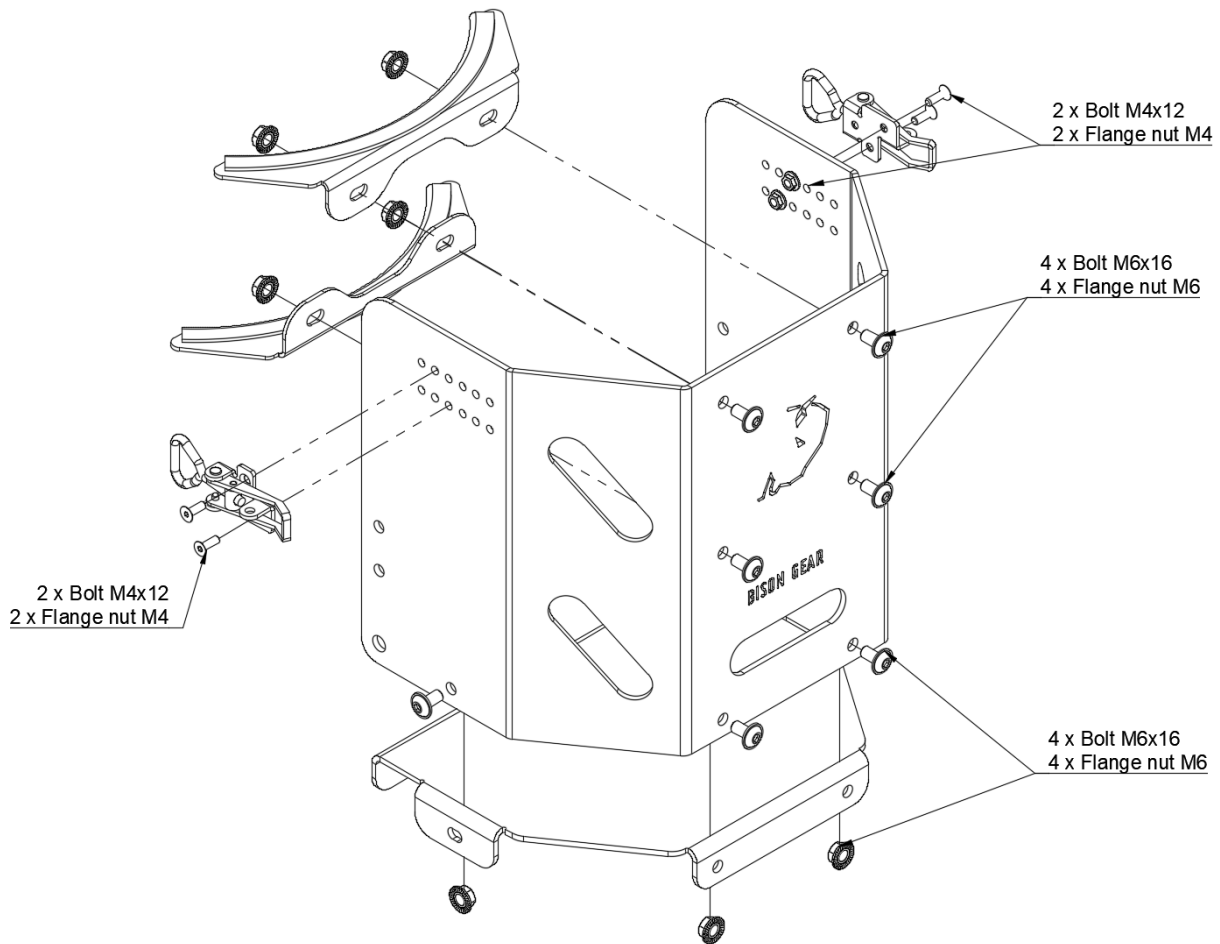
CASE 2 – 10 lb tank holder configuration

Below are diagrams showing how to assemble a 10 lb tank holder. Follow to the instructions and the steps carefully.





BISON GEAR



Now you can assemble these parts together. Below is a diagram which shows you how to do it. Before you start, gather all fasteners you will need in next step.

This is the most difficult part of the assembly.

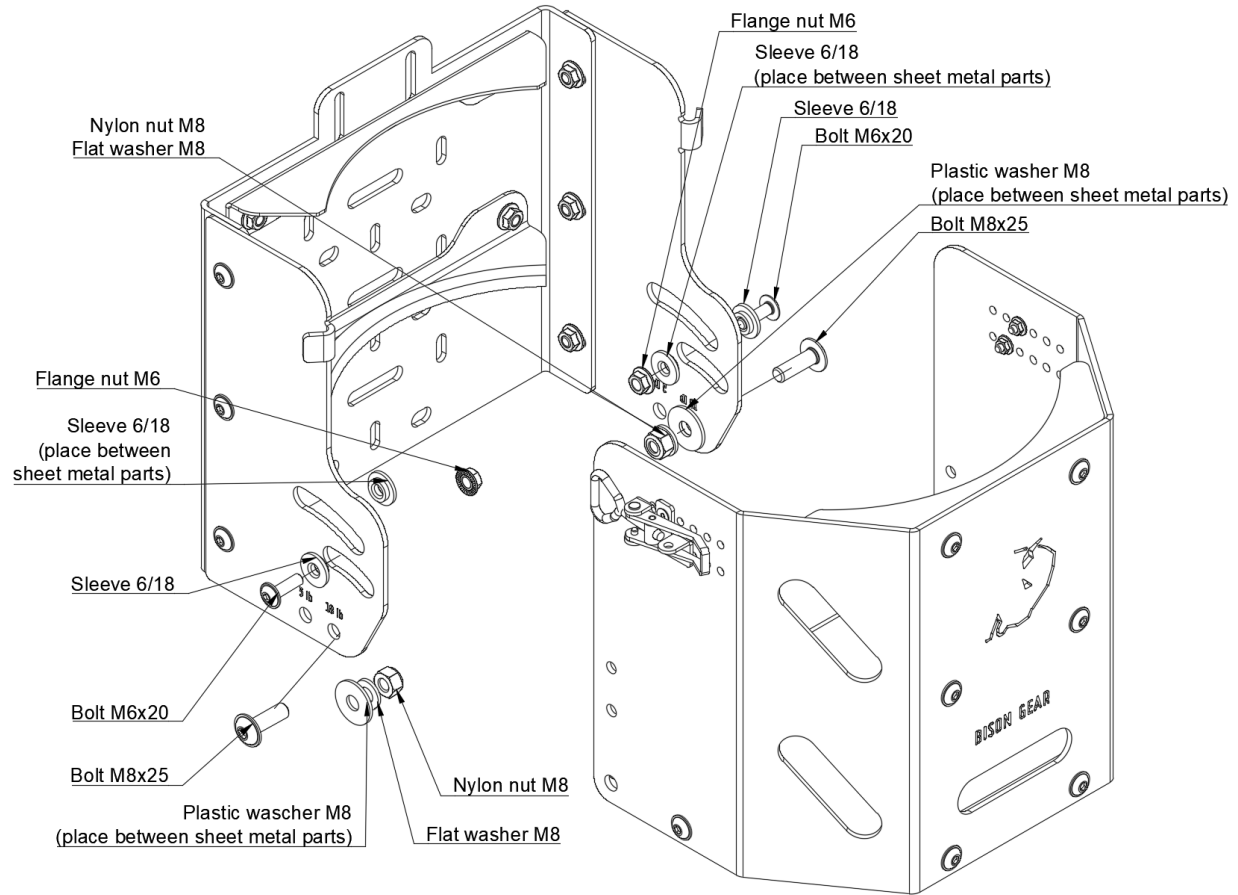
The parts have **markers** above holes (5lb and 10 lb). In this case choose “**10lb**” holes.

As you can see on the diagram, there are some guidelines. Remember, place a **plastic flat washers M8** between the sheet metal parts and do the same with the **2 flange sleeves**. Put **the collar** of the sleeve (right and left side) into oblong hole and assemble two parts of the gas tank holder. Screw them together using fasteners shown on the diagram.

During tightening **M8 bolt** check if the parts can rotate. Tighten the screws in such a way that a slight resistance is felt when rotating the part.



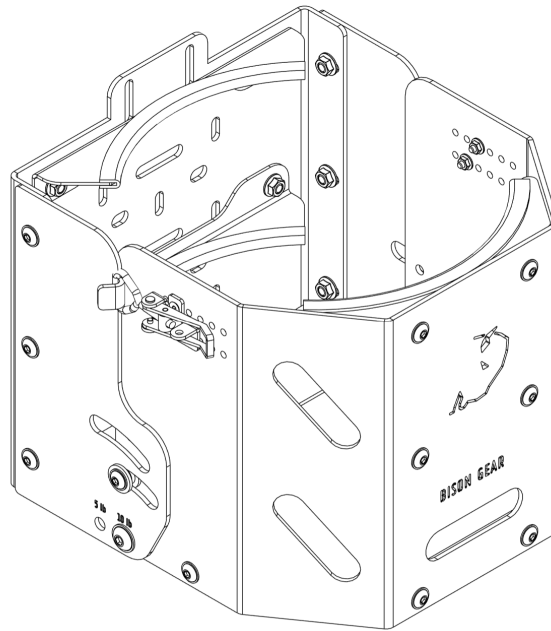
BISON GEAR





BISON GEAR

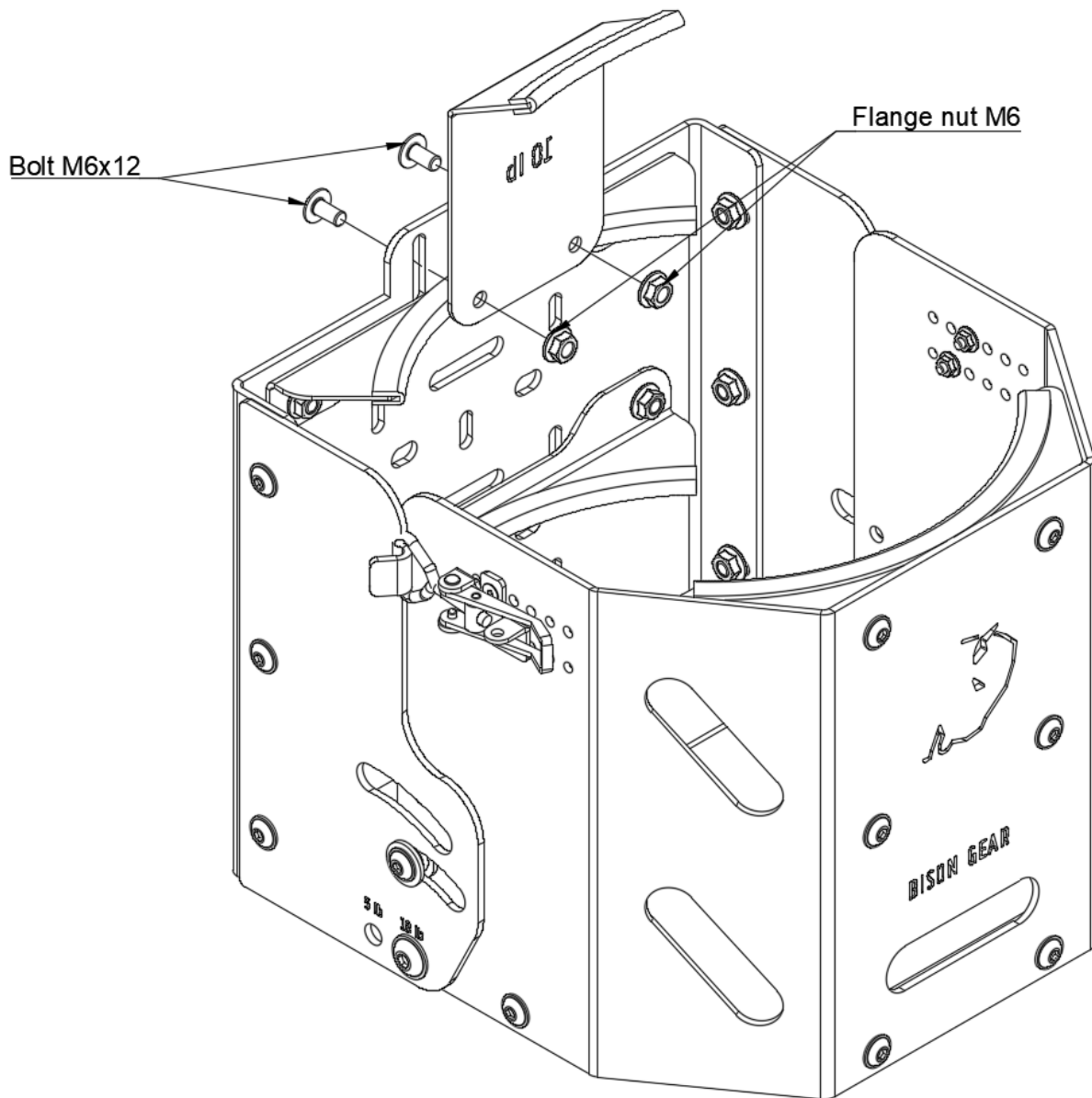
After assembly



Now you need to mount **upper holder**. For this configuration choose **10lb upper holder** (mark – **10lb**). Assemble it according to **the diagram on page 21**.



BISON GEAR





BISON GEAR

The last thing is to adjust the tank holder to the dimensions of the gas tank you have.

The gas tank should hold securely to the tank holder and under no circumstances can it fall out of the holder.

After closing tank holder, the gas tank should be slightly compressed. To adjust holder to your tank diameter, use **6 bolts** (three on the left and three on the right side). The bolts should be **only pre-screwed** – according to the instruction.

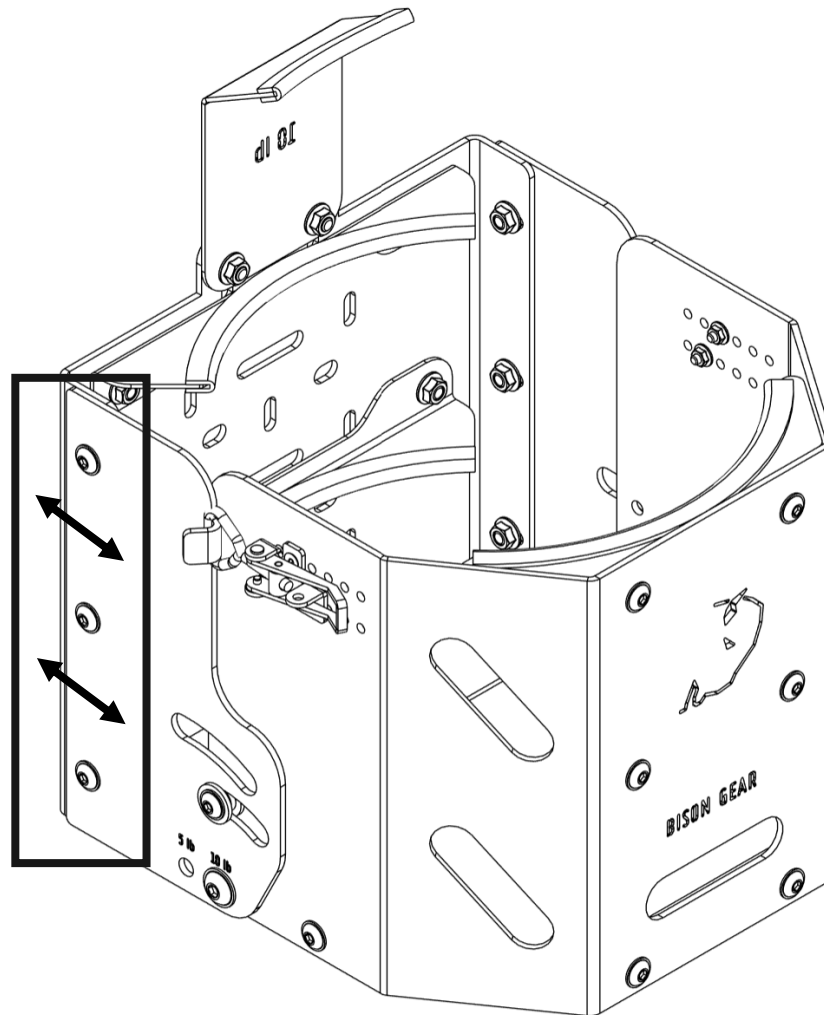
Distance between the bumpers should be less than diameter of the tank.

Move the parts, tighten the bolts and check if the gas tank hold well (gas tank and handle cannot be separated). If it is not appropriate, perform the procedure again until the condition is not met. **Remember, gas tank must stick to all four bumpers.**

Additionally, you can change position of **toggle latches** (the position of the upper diagram is recommended) to make some compression of the gas tank. You can choose other holes if needed.



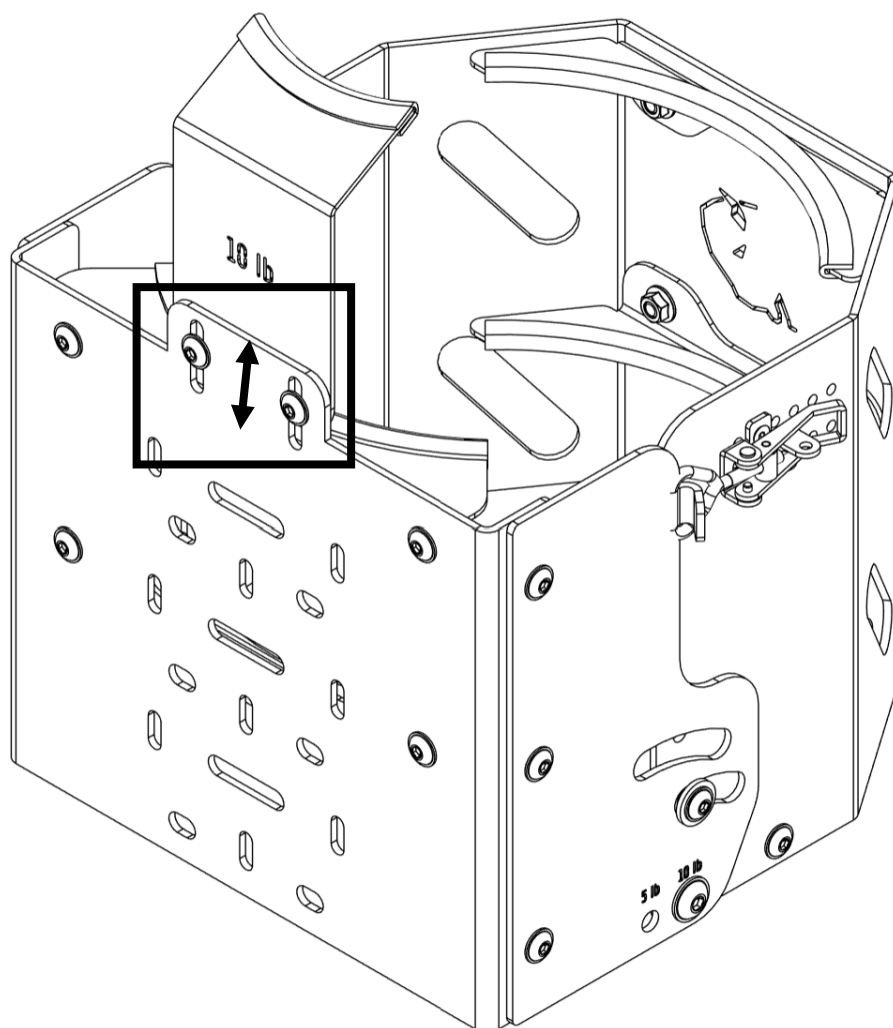
BISON GEAR



Adjust **upper tank holder** to the height of your's gas tank. Put the **gas tank** inside the holder and close **toggle latches**. Move **upper bracket** and resist it on the gas tank. Tighten the bolts. Move upper bracket and resist it on the gas tank. The upper bracket should protect the gas cylinder from falling out.



BISON GEAR



The set includes installation kit. Mount the tank holder (**using 4 bolts M6x16 and flange nuts**) to the car.

Make sure that everything is mounted properly, and all the bolts are tightened. If it everything is correct, your work is done.

After 50 km check tightening of the screws. Before each trip, check that the gas tank holds properly.



BISON GEAR

Have a great time with the Bison Gear product!



Email: contact@bison-gear.com

Phone: +48 505 642 981