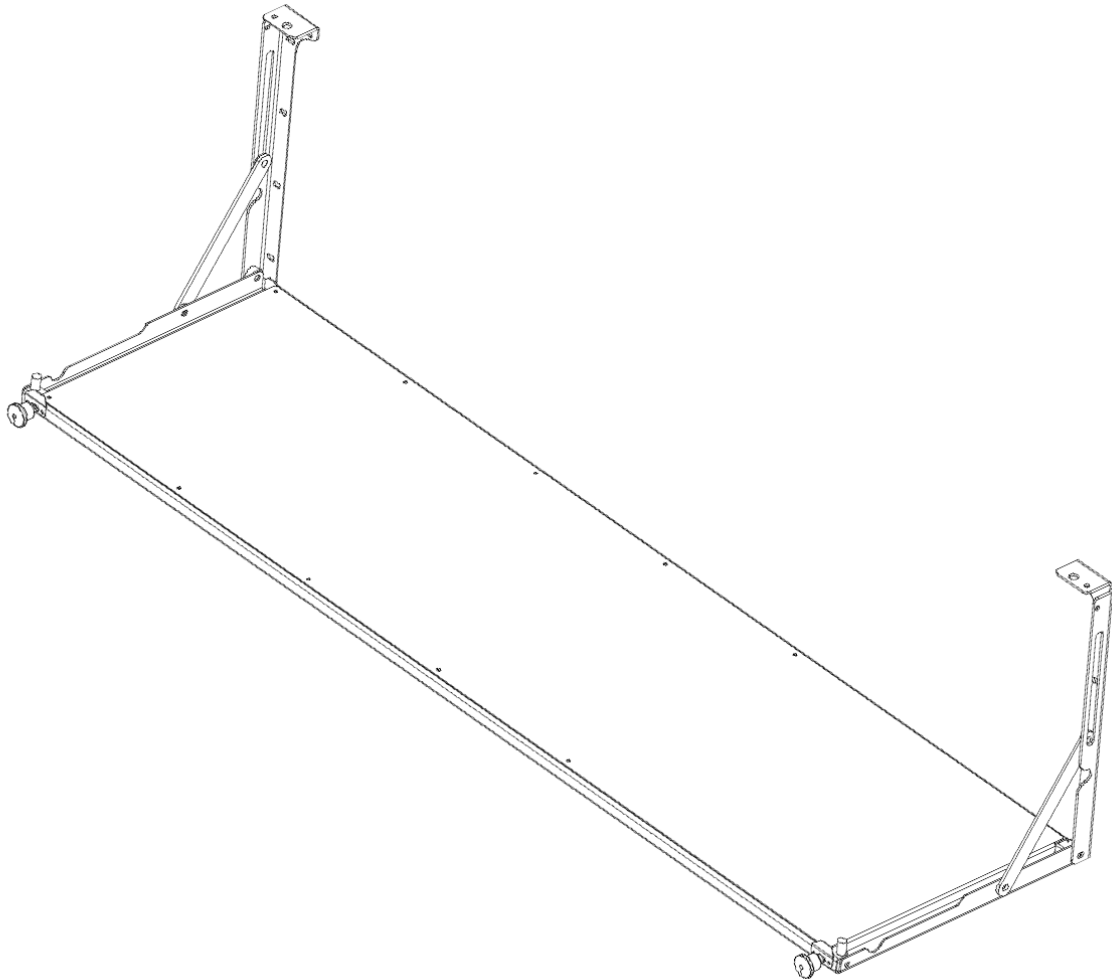




v1.0

# Table 104

## Installation Guide - FJ Cruiser



Required tools	Optional tools
<ul style="list-style-type: none"><li>• phillips head screwdriver</li><li>• 3 mm hex key</li><li>• 5 mm wrench</li><li>• power drill</li><li>• 5 mm drill bit</li></ul>	<ul style="list-style-type: none"><li>• pick</li><li>• small drill bit (2 - 3 mm)</li><li>• pencil</li></ul>



v1.0

### In the package

1 x	Table
6 x	5 x 20 mm bolts
4 x	M5 medium washers
2 x	M5 large washers
6 x	M5 nuts

## Installation

To install the table removing back door trim is required.

### Removing rear door trim

\* this procedure is also available as a video on Bison Gear YouTube channel

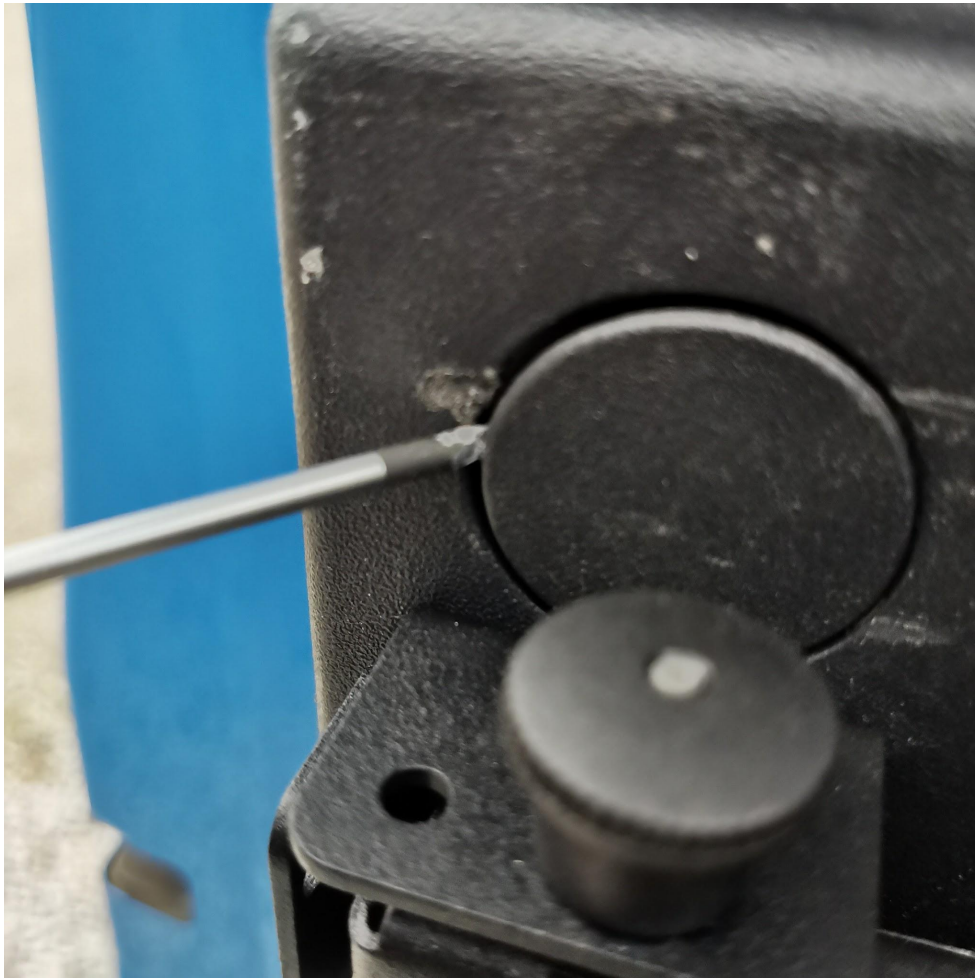
Open back window





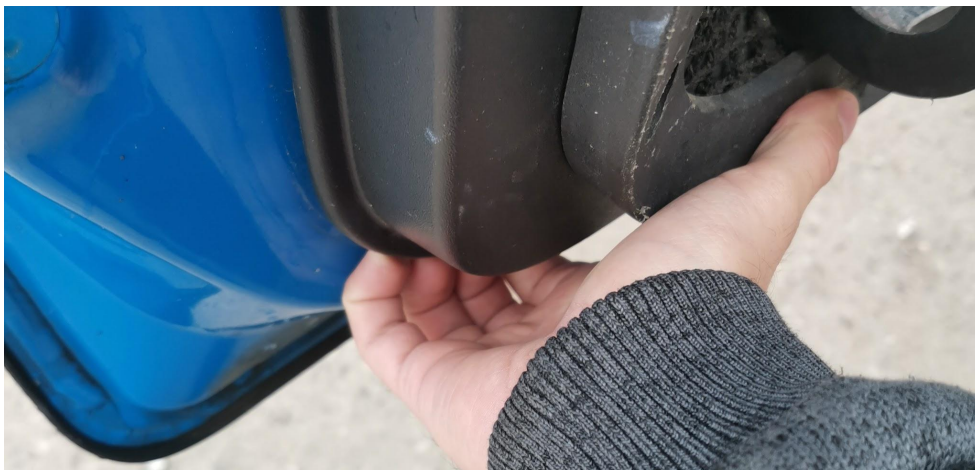
v1.0

Remove plastic caps (on top right and left trim corners).



Unscrew the screws under the plastic plugs, use a phillips screwdriver.

Pry up the left corner of the upholstery (you can use a flathead screwdriver).







v1.0

Pull firmly toward you to pop off upholstery. When all pins are free, push trim up and remove it.

Put removed door trim on a flat surface.  
Place the table on the trim and align it.



Leave access to mounting holes.



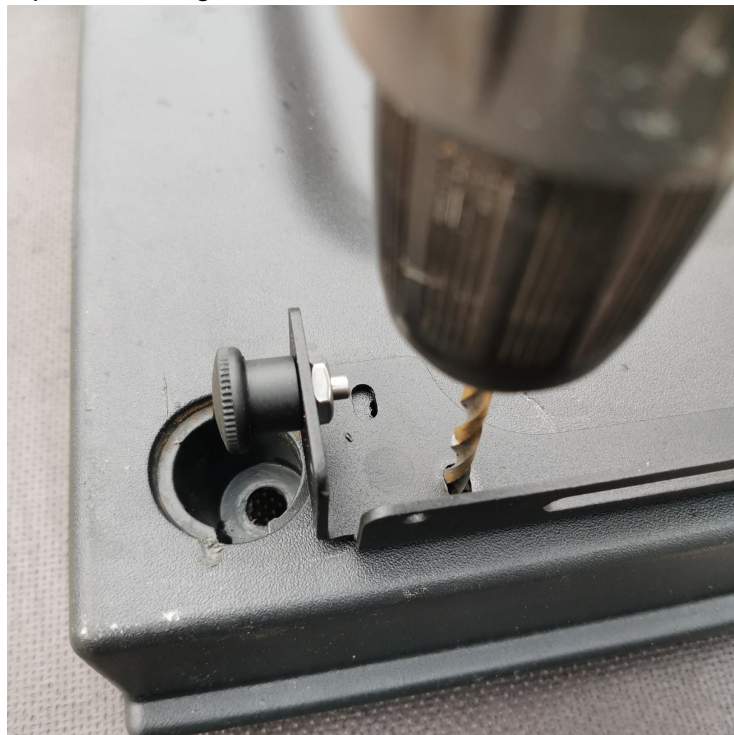
Using holes in the front panel mark holes using small drill bit or sharp pick.



v1.0



Drill hole in marked position using 5 mm drill bit.







v1.0

Using a 5 x 20 bolt and large washer screw in bracket to the trim.



Close the table and check locks alignment. Pin inside the lock must be on the same axis as the socket hole, and the lock should hold on both sides of the table.



Mark and drill hole on the opposite side of the table.



v1.0

Repeat steps as for the first bracket. Drill small hole, drill 5 mm hole. Use a 5 x 20mm screw and large washer to screw bracket to the trim.

Check if locking pins are in line with the holes and table locks without any issue.  
If the table closes without any issue use at least two more bolts to attach it in the bottom part.

This table can be also fitted on:

- Land Cruiser 120
- Land Cruiser 150
- Lexus GX470
- Lexus GX460