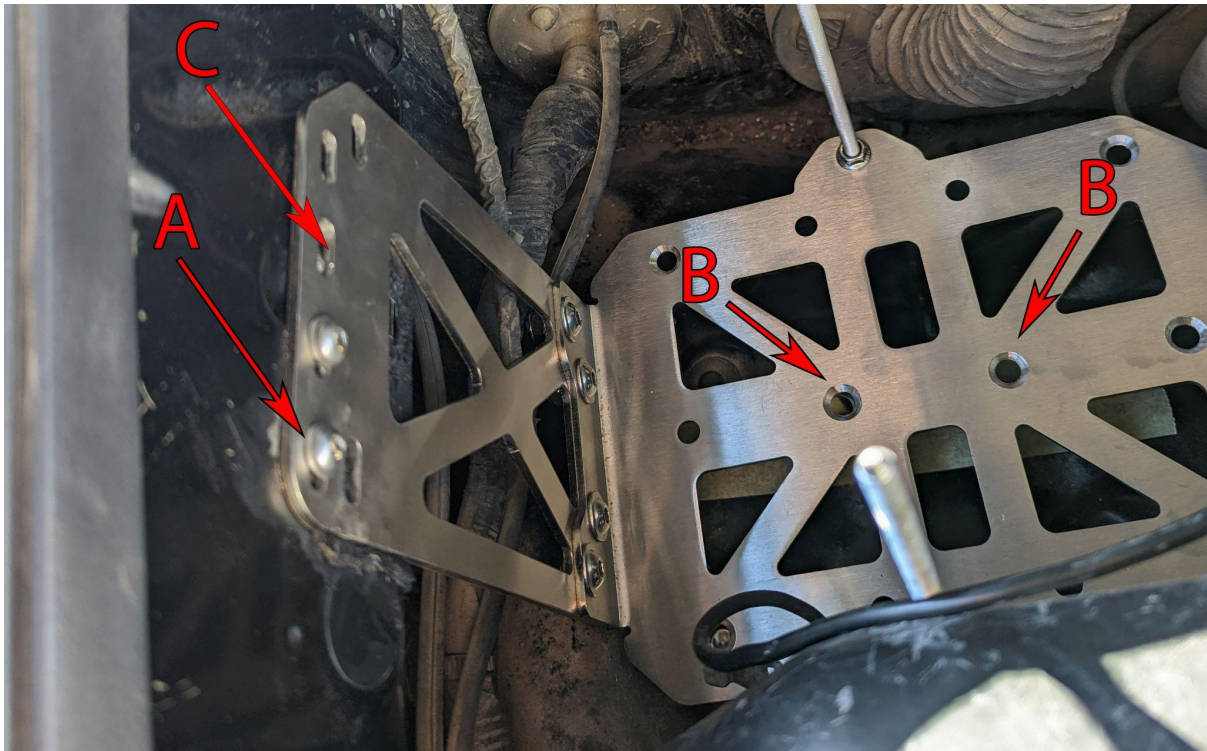
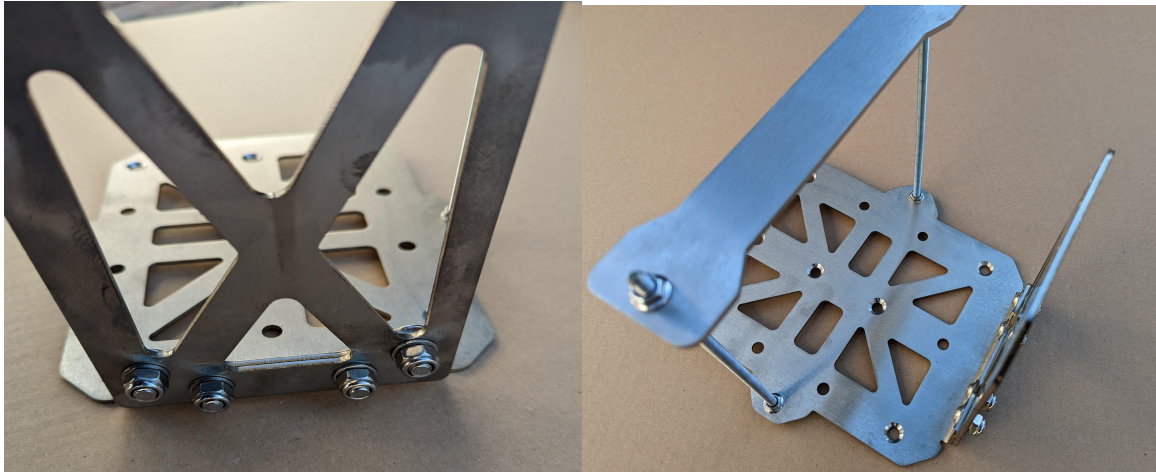




Battery tray installation guide

1. Preassemble bracket as shown on images below.



2. Test fit battery bracket. Screw in M6 bolt in place marked by "A"



3. Mark holes "B" on the fender. You can use masking tape.



4. Drill holes with 8 mm drill bit.

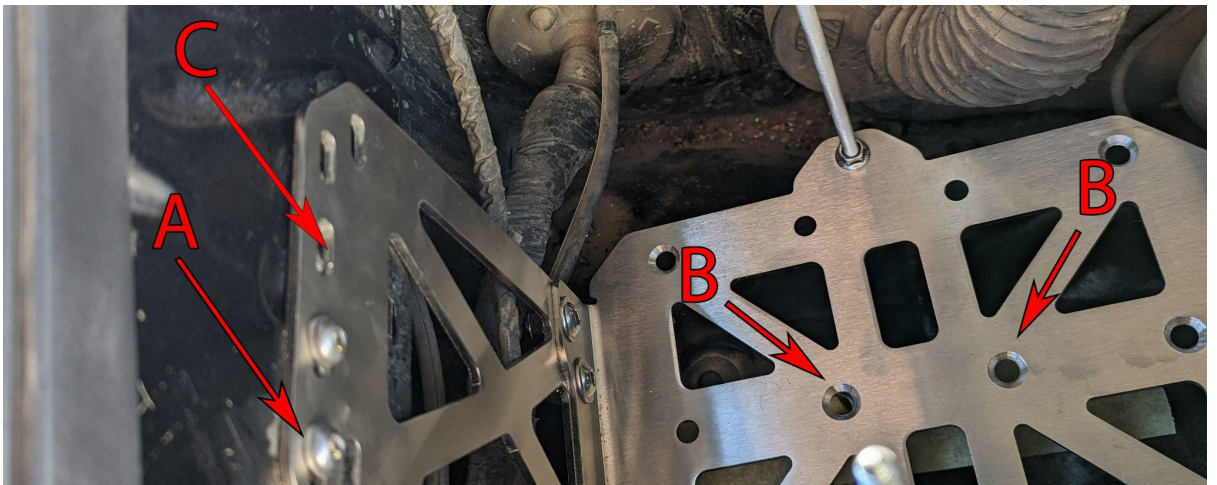




- Using M8 bolts screw screw in bracket to the wheel well. Use stainless steel spacers.



- Mark center of the slot on the fender "C"



- Remove the battery bracket.
- Drill 9 mm hole in marked "C" spot.
- Install Rivet Nut in the hole.
- Reinstall the brackets. Use two M6 bolts on the fender and two M8 bolts with stainless steel under the bottom of the bracket.
- Done.