



# FJ Cruiser Molle Panels installation guide

## Left and right panels on cars without subwoofer

1. Attach the top bracket to the panel (use 2x M6x14 bolts, flat washers, and the nuts).



2. Unscrew plastic hook in roof section of the car (above trunk window).
3. Unscrew two plastic hooks below the window (see picture below). Use a 10 mm socket or phillips screwdriver.

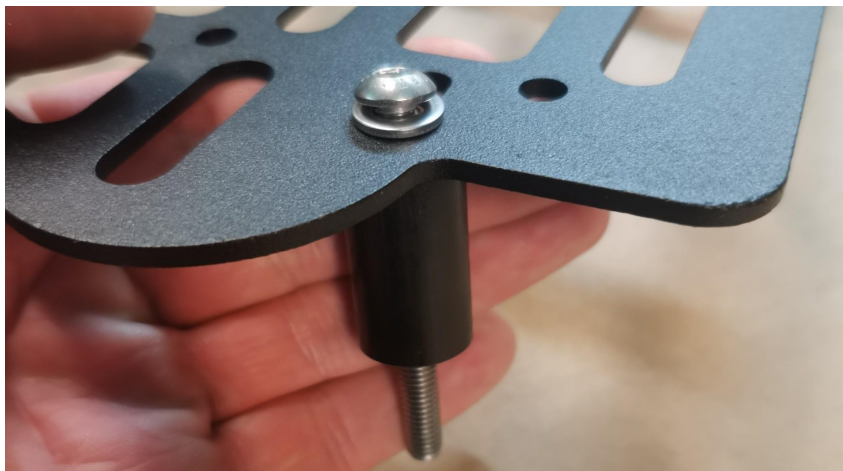




4. Attach panel to the roof (leave it loose for further adjustments)



5. Using factory hooks, large plastic spacers, M6x60 bolts and washers attach panel in the bottom.

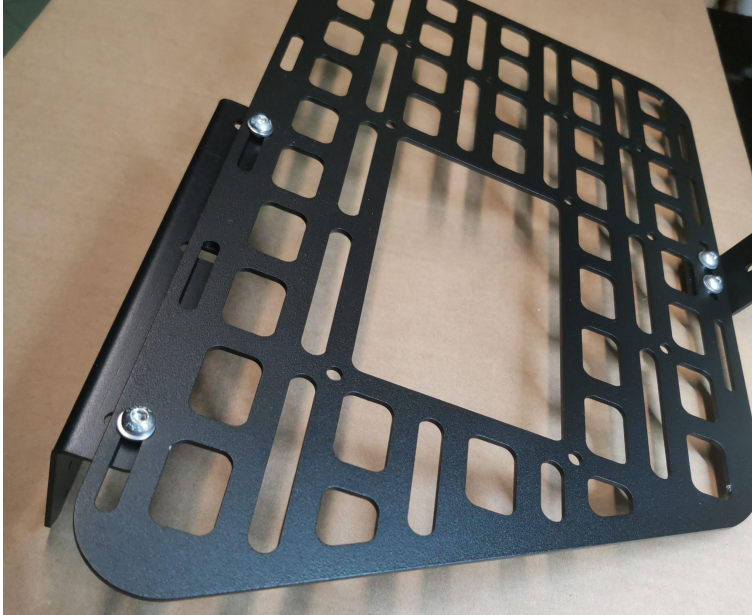


6. Tighten all bolts after aligning the panel properly.



## Right panel with subwoofer

1. Assemble the panels as shown in the image below (top part is identical as the one on left panel, on the bottom use angle bracket). Leave all bolts loose.



2. Remove the top hook (the one over the window).
3. Test fit the panel and adjust it, so it fits properly.



4. Remove the panel and remove protective film from adhesive tape.
5. Install the panel, when aligned, tighten all bolts.

**DONE**