



2021-09-20, rev.2.0

Dropdown tailgate installation on LC120 and GX470

1. Remove plastic trim on sides of the window (push it inward)





2021-09-20, rev.2.0

2. Remove clip





2021-09-20, rev.2.0

3. Unscrew trim bolt



4. Remove handle clips





2021-09-20, rev.2.0

5. Gently remove the handle



6. Open and remove tools compartment



7. Gently pry the trim on right bottom corner, using flat screwdriver or trim removal tool



2021-09-20, rev.2.0



8. When it becomes loose, manually remove the trim



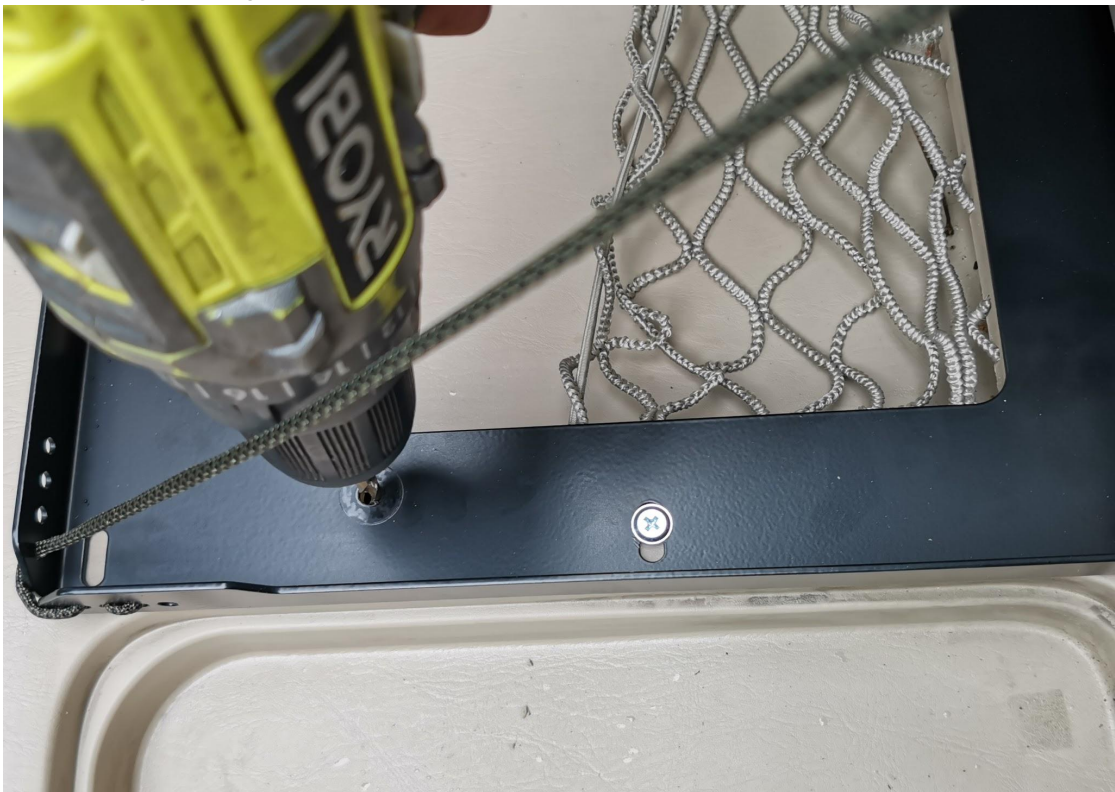


2021-09-20, rev.2.0

9. Align the table with the indented part of the doors.



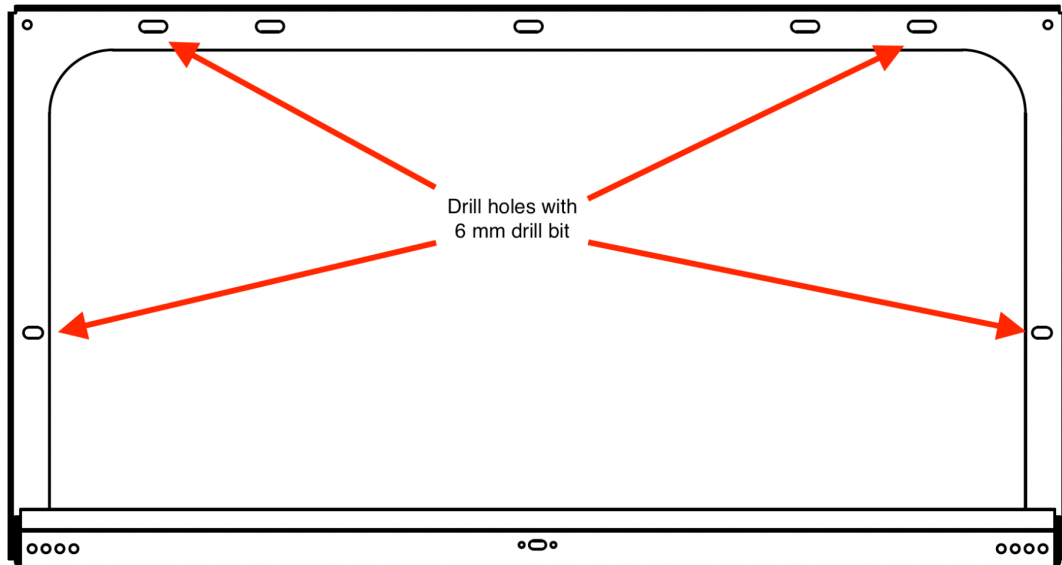
10. Using a 6 mm drill two holes on the left and right side of the bracket that will allow screws to go through.





2021-09-20, rev.2.0

11. Drill 4 holes in plastic trim using a 6 mm drill bit.



12. Screw in 4 screws, (place washers behind the plastic trim).
13. Optionally drill 2 more holes in the lower part of the bracket. This step is not required.
14. Assemble trim in reverse order. Check if the shelf works correctly a few times during the operation.

DONE