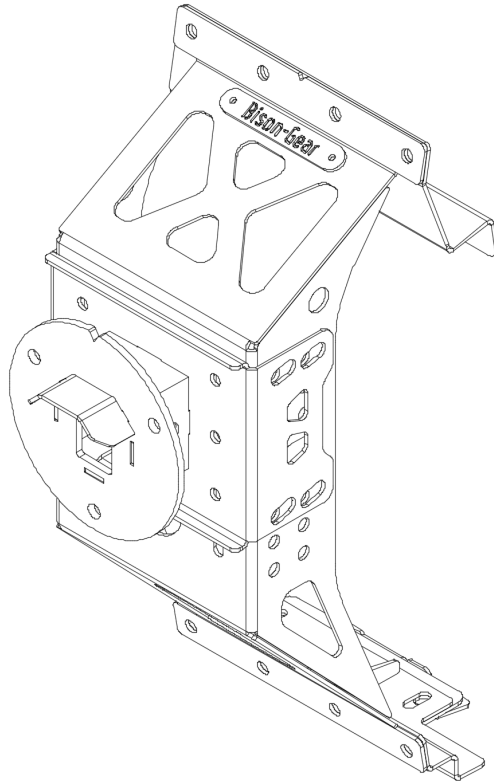




ver. 1.0

Wheel Carrier Installation Guide

Land Cruiser j120 / Lexus GX470





ver. 1.0

Removing door trim

1. Remove plastic trim on sides of the window (push it inward)



2. Remove clip





ver. 1.0

3. Unscrew trim bolt



4. Remove handle clips



5. Gently remove the handle





ver. 1.0

6. Open and remove tools compartment



7. Gently pry the trim on right bottom corner, using flat screwdriver or trim removal tool





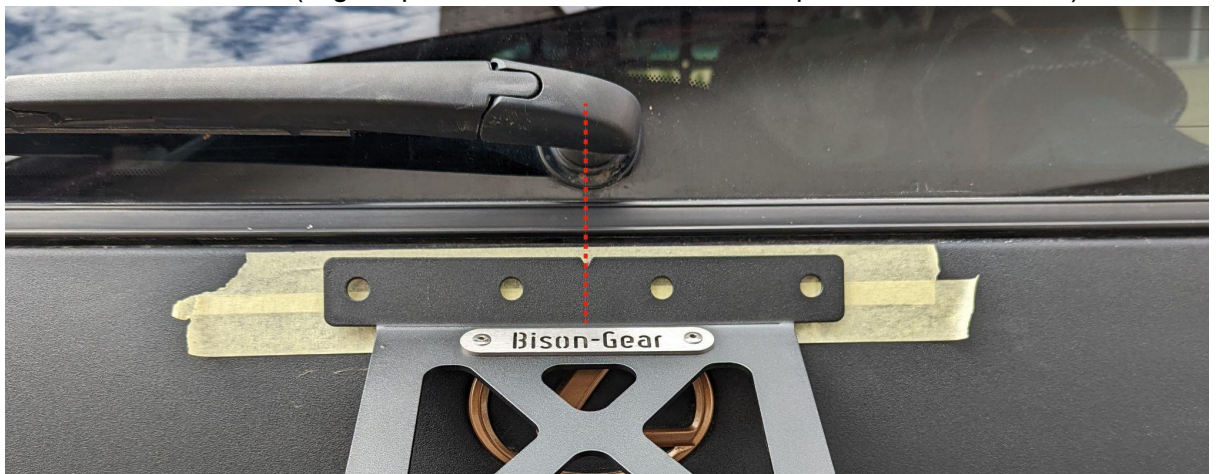
ver. 1.0

8. When it becomes loose, manually remove the trim



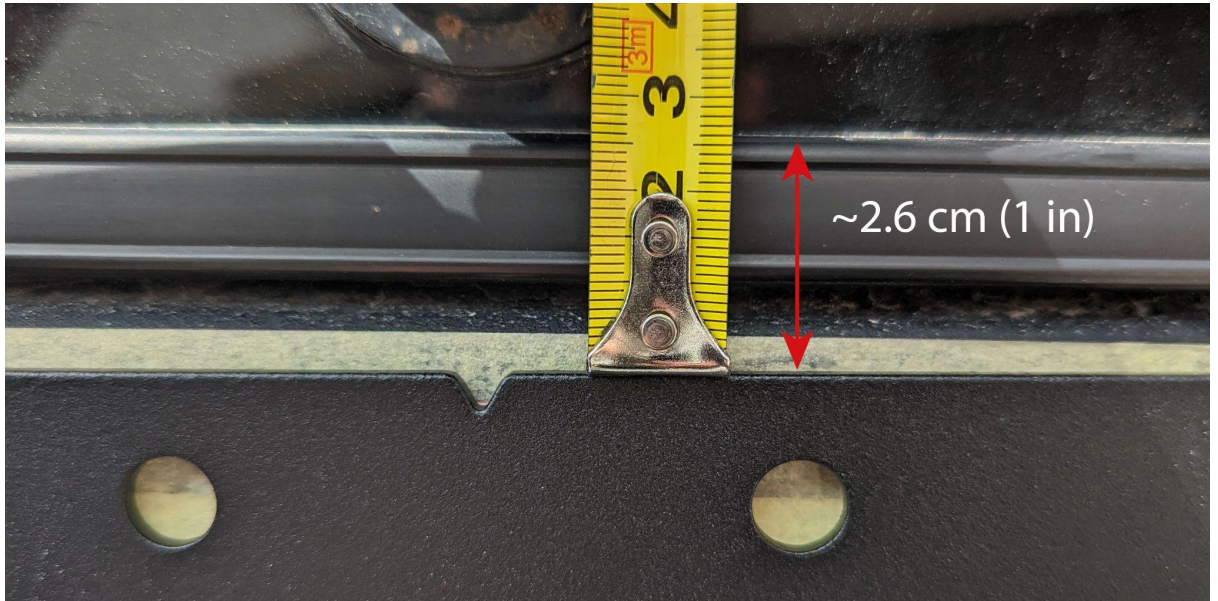
Wheel carrier installation

1. Use masking tape to prevent paint scratches.
2. Position wheel carrier (align wiper blade rod with indent on top of the wheel carrier)





ver. 1.0



Distance from the top edge of the rubber seal should be around 2.6 cm (1 inch).

3. Mark holes position.





ver. 1.0

4. Center punch each hole mark



5. Drill holes, start from a small drill bit (~3 mm) or use a step drill. Use an 11 mm drill for the final hole.





ver. 1.0

6. Paint edges of each hole to prevent rusting issues in the future.



7. Insert top reinforcement bracket inside the doors and align holes with carrier top holes.





ver. 1.0

You should see thread in all 4 holes (use pick or screw driver to easily center the holes).



8. Screw in 2 center screws. Do not tighten it yet.



9. **Using the same way as on top, mark bottom holes (while the carrier is attached with 2 screws on top).**
10. Remove the carrier.



ver. 1.0

11. Center punch marked holes and drill holes in marked spots (as on top, start from small drill ~3 mm and finish on 11 mm drill bit).
12. Paint hole edges to prevent rust.
13. Peel off protective film from double tape on the mount.



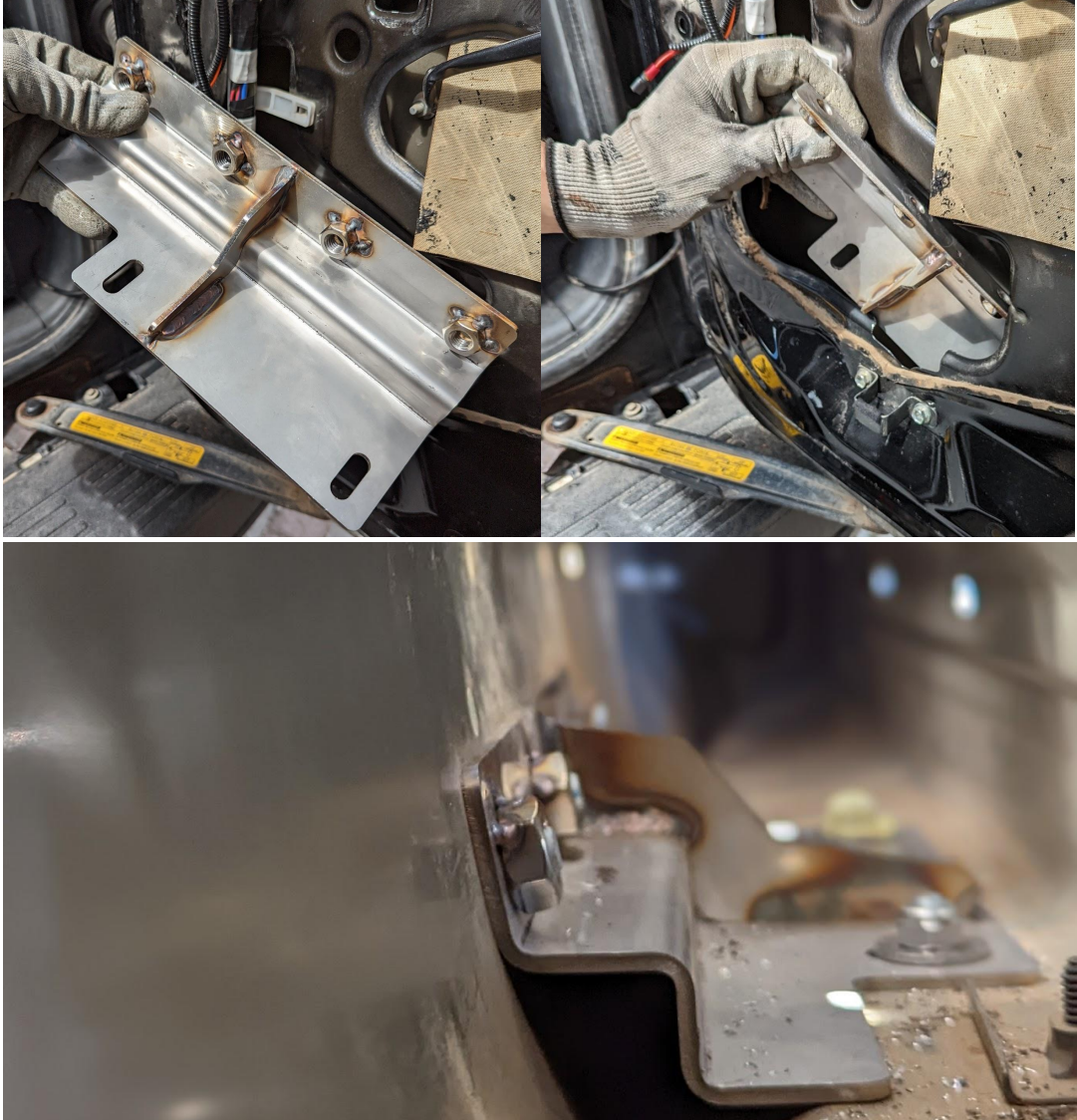
14. Reinstall wheel carrier. Screw in all 4 top bolts (leave them loose).
Use thread locker!





ver. 1.0

15. Insert bottom reinforcement into the doors.





ver. 1.0

16. Align bracket threads with holes in the bottom part of the doors. Screw in all 4 bolts, use thread locker.



17. Tighten all bolts on top and then on the bottom of the wheel carrier. **Torque to 65 Nm.**

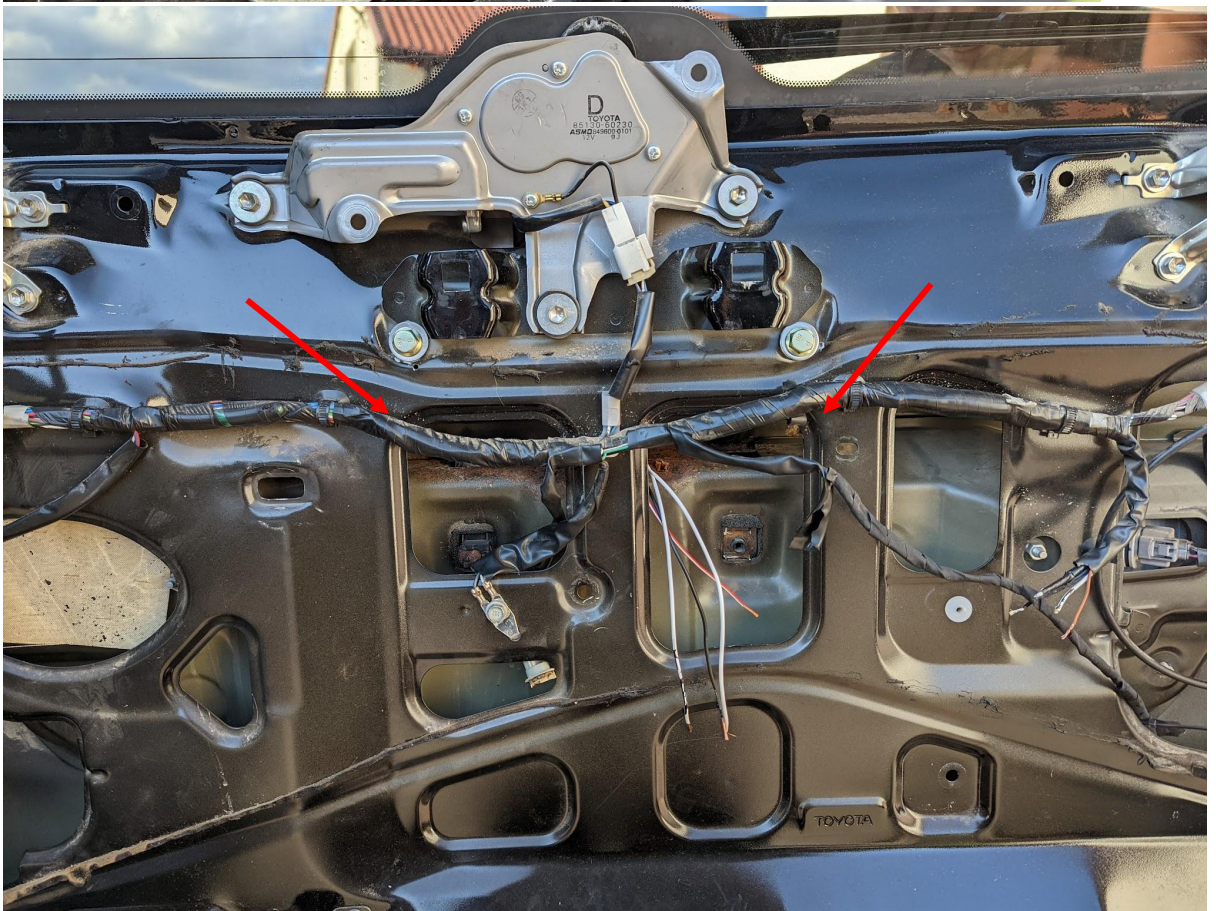


18. Drill 8 mm holes in the back skin of the doors. Hole placement is on edge of the bracket that keeps the door handle. It should go through the door and the bracket



ver. 1.0

inside it (stainless steel requires sharp drill - **use low rotation speed to not overheat drill bit**).

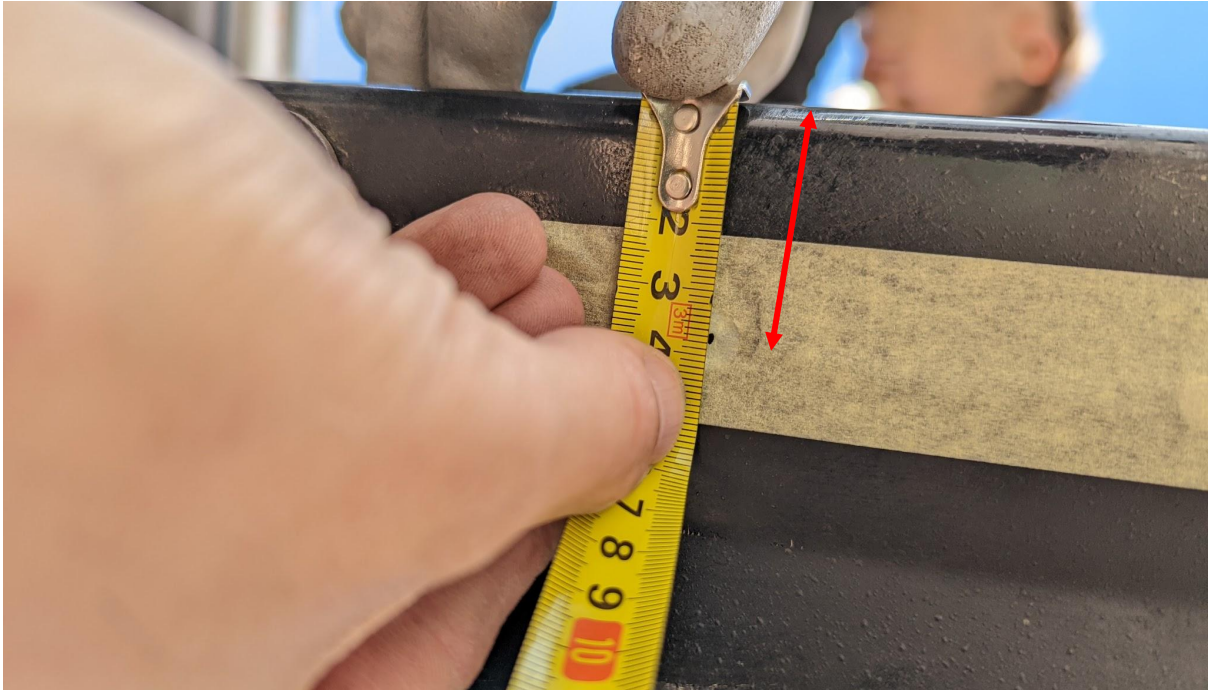


19. Screw in M8 bolt and nut with spring washer.

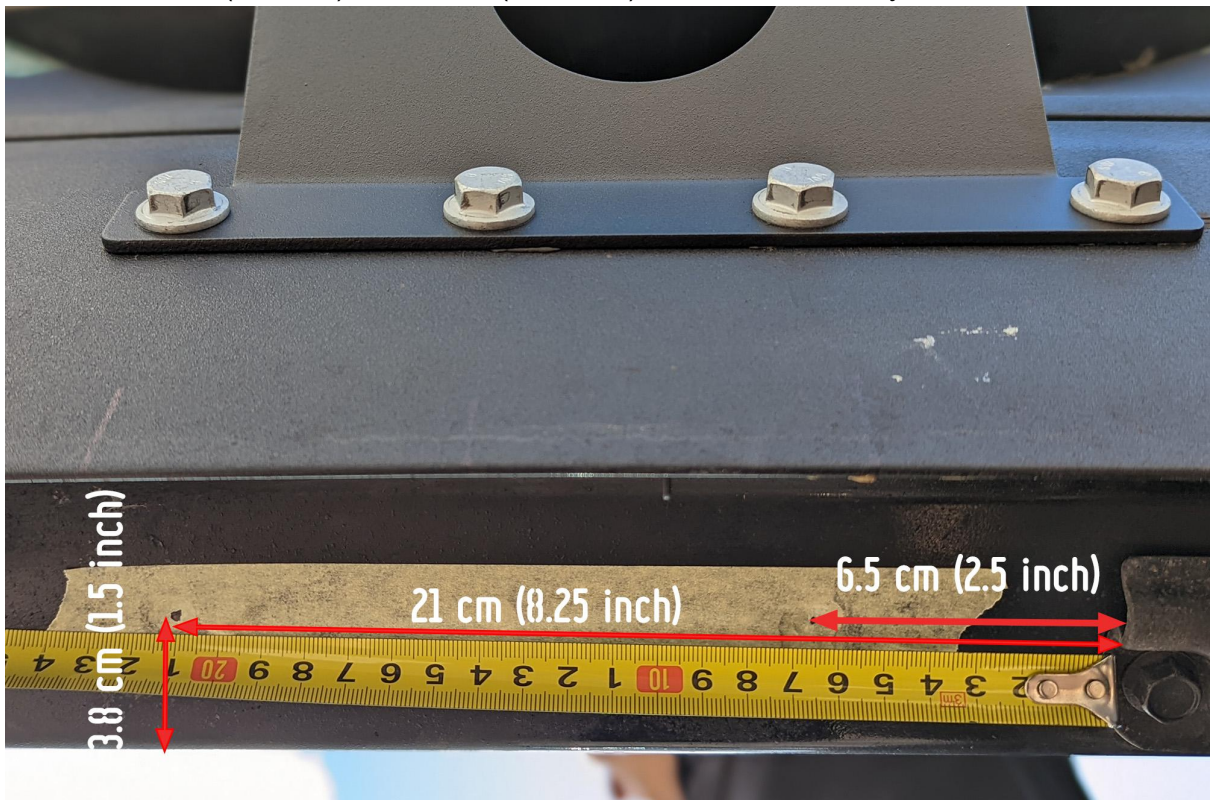


ver. 1.0

20. On the bottom part of the doors measure holes for the support bracket.
Measure ~3.8 cm (1.5") from the inner edge of the doors.



21. Measure 6.5 cm (2.5 inch) and 21 cm (8.25 inch) from back door stay





ver. 1.0

22. Center punch and drill 8 mm (5/16") holes. If you have troubles with fitting bolt you can use 9 mm (3/8") drill to enlarge holes.



23. Install support plate, chamfered part must be faced to the trunk.





ver. 1.0



Place the bolt from the bottom of the doors through door skin and inner support. From the inside of the doors place washer and nut. Align support plate. Tighten both bolts.

If you have troubles with reaching bolts from the inside, use adhesive tape to keep nut on the spanner.





ver. 1.0

24. To install “tongue” support, remove the plastic cover near the trunk.
First remove the plastic cap on the bolt, unscrew the bolt, push up the door limiter
(might require some force).



Pull up the trim.

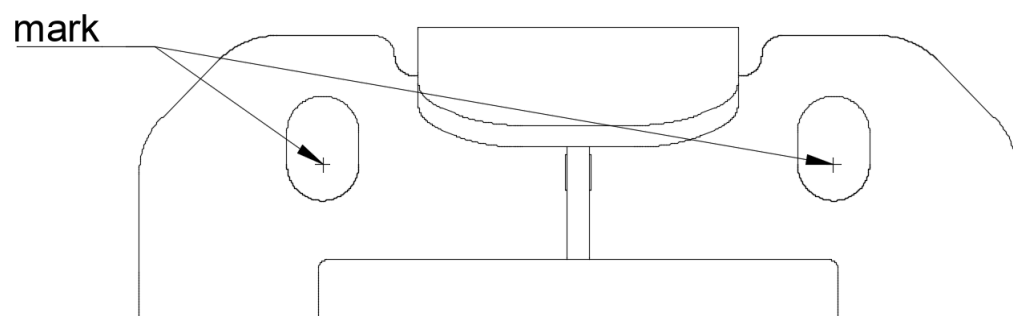


ver. 1.0

25. Place the “tongue” support in the center part of the bumper (image below).



26. Mark hole position. Drill in the bottom part of the slot.

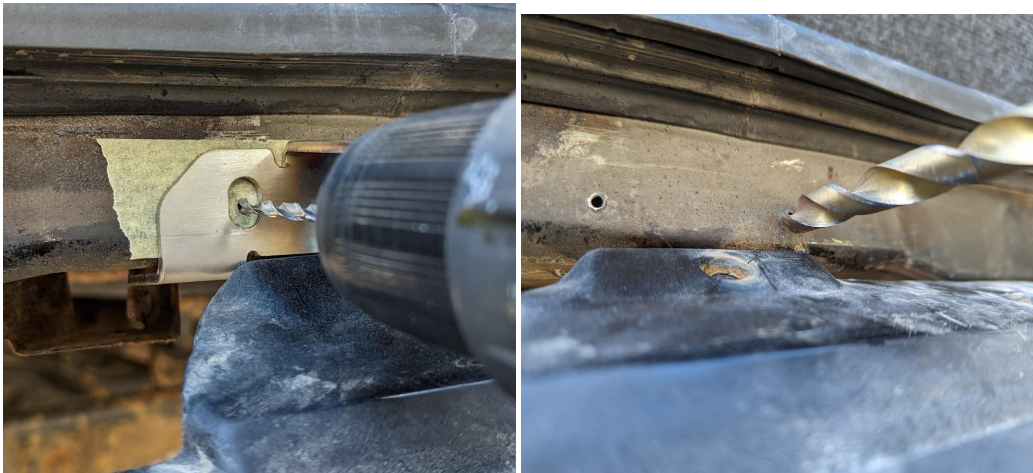




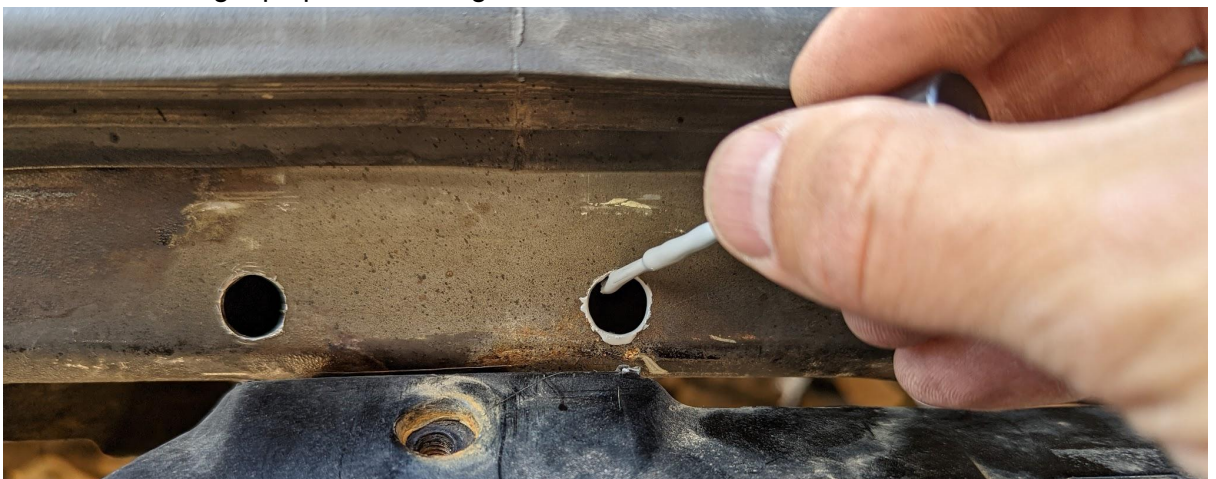
ver. 1.0



27. In marked spots drill holes with step drill or using small drill bit got to the final 11 mm bit.



28. Remove masking tape paint hole edges.



29. Install rivet nuts. You can use a dedicated riveting tool or make your own tool using bolts and nuts. (use YouTube video link: <https://youtu.be/tV6RXQjHecc?t=59> or scan



ver. 1.0

QR Code).



30. Place support in place and screw in M8 bolts (leave the bolts loose so that support can move up and down).





ver. 1.0

31. Repeat procedure on the bottom part of the support.





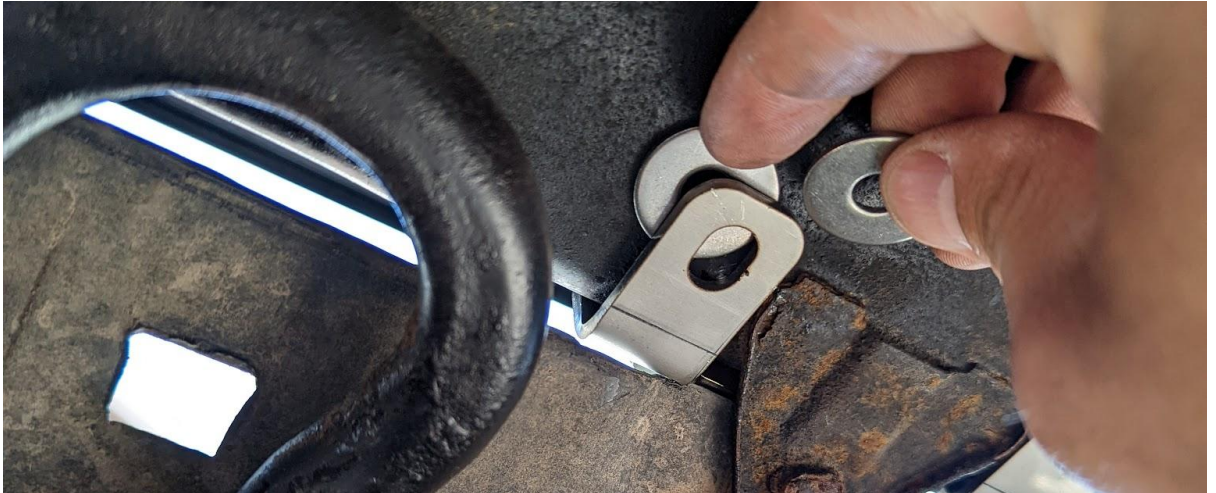
ver. 1.0





ver. 1.0

32. Close the doors and check if support has contact with the doors plate. Using washers adjust the support.



33. Test if doors closes without any issue. In some cases it might be required to use door shims for adjustments.
34. Place the mount "head" in a position that suits your wheel size. You can adjust wheel angle and distance from the doors.





ver. 1.0



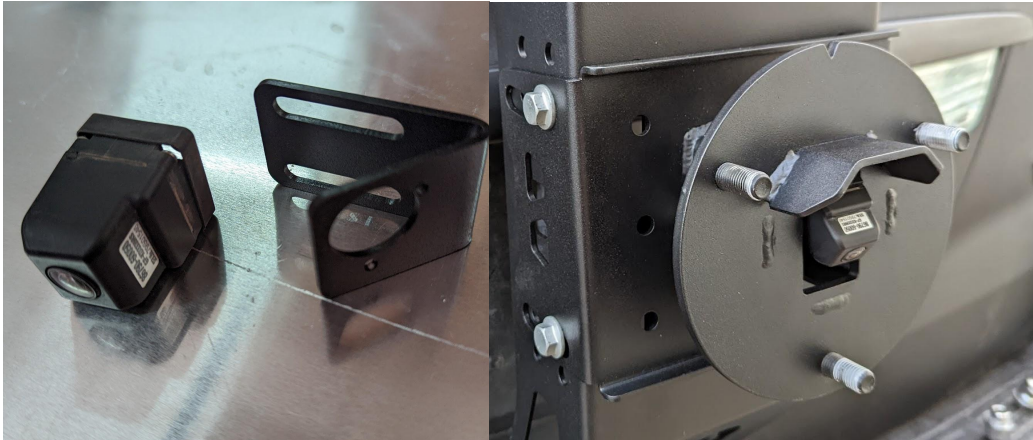
Use aluminum spacers if needed.





ver. 1.0

35. Install backup camera using factory screws. Use 2 M6x14 bolts to attach the camera bracket to the wheel carrier.



36. Cut holes for "tongue" support.





ver. 1.0

37. Reinstall bumper trim.



DONE