



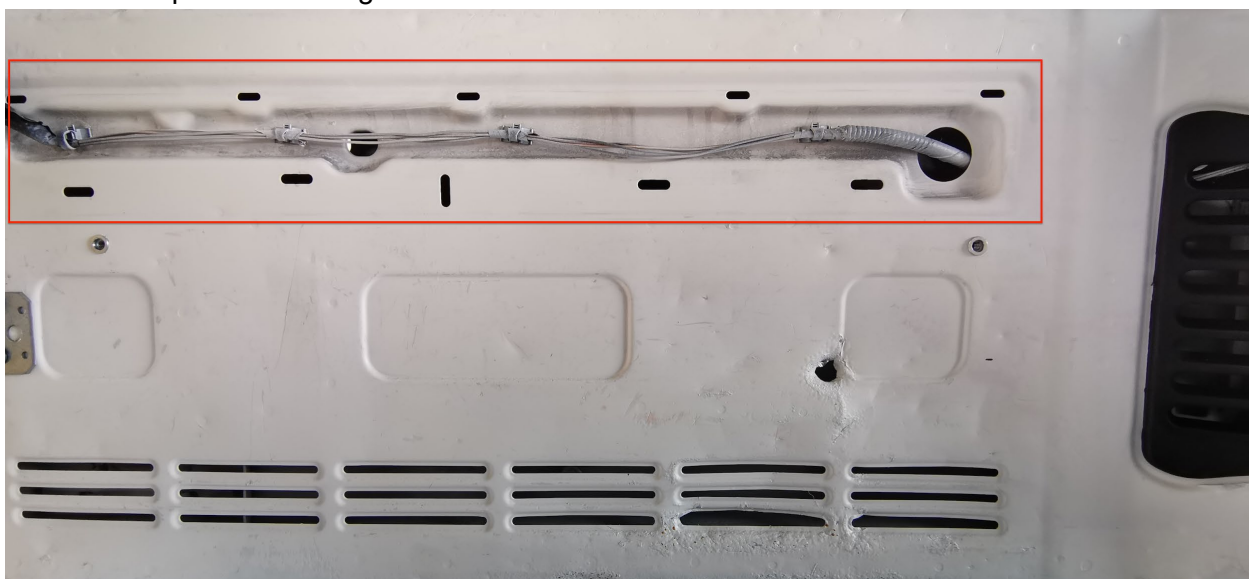
v1.1

Installation of Shelf - Jeep Wrangler JK

The following additional accessories are necessary for installing a shelf in a Jeep Wrangler JK:

- M6 screws with captive nuts, 4 pieces.
- 9mm drill bit + smaller diameter drill bit (2-3 mm).
- 10mm wrench.
- Sheet metal screws (optional).
- Phillips screwdriver.
- Drill.
- Rivet gun for captive nuts.

1. Remove the plastic covering the wires in the trunk doors.



2. Test-fit the shelf to the doors in both folded and unfolded positions, with the table extended, to adjust the mounting position according to your needs.
3. Remove the rubber spacers at the bottom of the shelf (only used in Wrangler JL).



v1.1

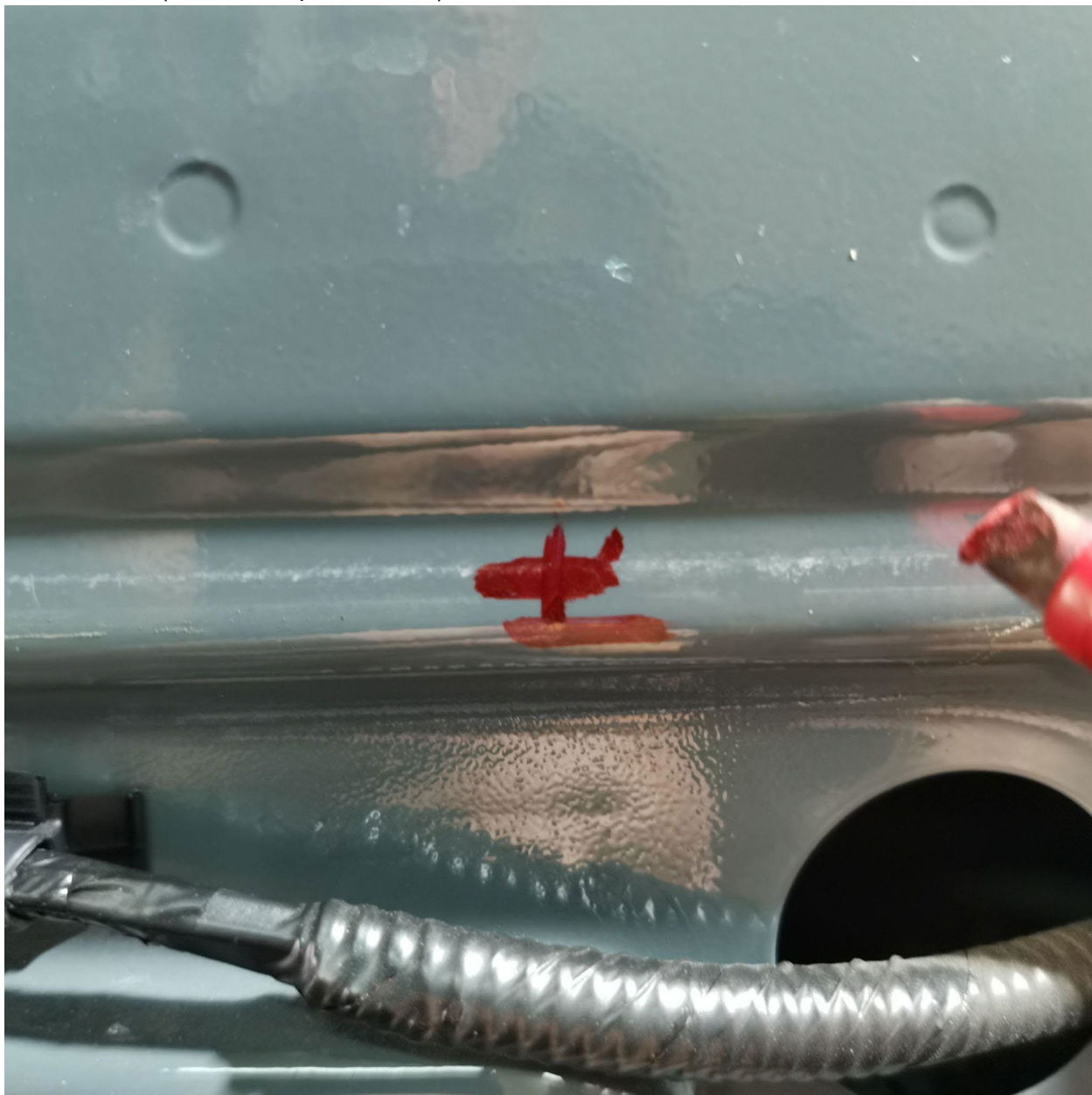
4. Mark the drilling points for the upper holes (align the table with the tailgate - it is recommended to have assistance from another person).





v1.1

It is important that the drilling points for the upper holes are on the edge of the embossment (refer to the photo below).



- a) Use a center punch to mark the drilling points.
- b) Use a small drill bit to make a pilot hole (2-3 mm drill bit).
- c) Use a 9mm drill bit to drill the hole for the captive nut (CAUTION: 9mm is the standard drill bit size for M6 captive nuts, check the diameter of your captive nuts before drilling!).



v1.1

- d) Secure the captive nut using a rivet gun.



- e) Install the second captive nut in the same way at the same height.
5. Attach the table to the upper screws. Repeat the procedure for the two screws in the middle section