



LC120 / GX470 Roof Rack Installation Guide

Remove factory rails

1. Remove plastic covers as on video below
<https://youtu.be/9zll3DC8djE>



2. Unscrew all bolts reviled after removing plastic covers.
3. Remove the rails.

Preparing the roof

1. Clean surface near bolt holes on the roof. Use degreaser or alcohol.



2. Place spacers over each bolt hole (sealant should be between roof and the spacer).



3. Bolt on all brackets. Use a long M8 x 55 mm bolt, M8 spring washer, M8 flat washer (the bolt head might be different than in the attached photo). Leave bolts loose for further adjustment.

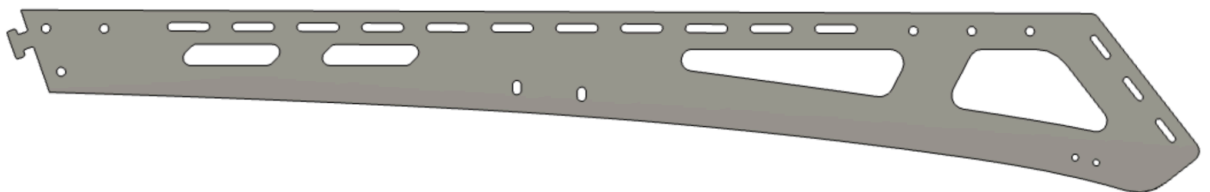
Each bracket has a marked position on the roof (*front, middle, back*). Slots on all brackets must be in horizontal position (as on images below).

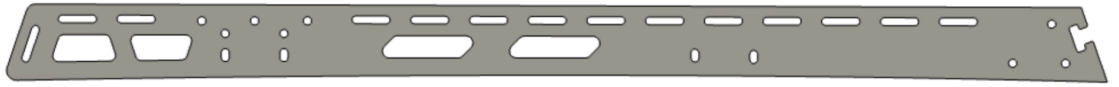




Assemble the rack

1. Connect the front part of the rail with the back part of it as shown in the image below.



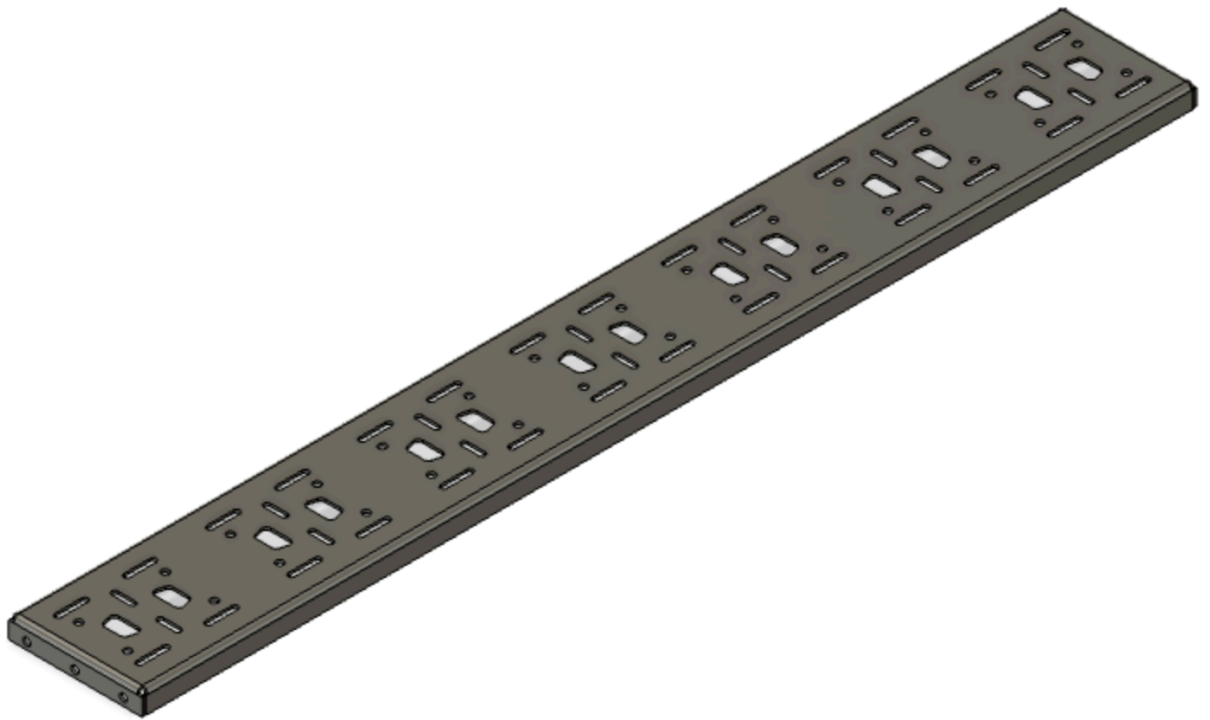


Use 25 mm bolts, flat washers and M8 nuts.



Repeat this step on the second rail (make sure it's mirrored).

- Using M8 x 20 mm bolts, attach 3 aluminum panels (front, middle and back of the rails).



3. Using M6 x 20 mm bolts, spring and flat washers, attach bars in preferred positions.



4. Attach a wind deflector (6 x M6 x 20 mm bolts, with springs and nuts). Do not tighten the bolts.

Install rack on the roof of the car

This step requires two people.

1. Gently place the assembled roof rack on the car roof. Keep installed on the roof brackets inside the rack.
2. Use M8 x 20 mm bolts, flat washers and nuts to attach roof rack to the brackets.
3. Align the rack on the roof.
4. Align the wind deflector so it doesn't touch the roof.

DONE

